

ApoER2 (LRP8) Antibody (CT)

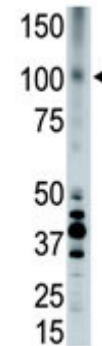
ALTERNATE NAMES:	LRP8; APOER2; Low-density lipoprotein receptor-related protein 8; Apolipoprotein E receptor 2
CATALOG #:	6721-100
AMOUNT:	100 µl
HOST/ISOTYPE:	Rabbit IgG
IMMUNOGEN:	This APOER2 (LRP8) antibody is generated from rabbits immunized with a KLH conjugated synthetic peptide between 934-963 amino acids from the C-terminal region of human APOER2 (LRP8).
PURIFICATION:	This antibody is prepared by Saturated Ammonium Sulfate (SAS) precipitation followed by dialysis against PBS.
MOLECULAR WEIGHT:	~105.6 kDa
FORM:	Liquid
FORMULATION:	Supplied in PBS with 0.09% (W/V) sodium azide.
SPECIES REACTIVITY:	Human.
STORAGE CONDITIONS:	Maintain refrigerated at 2-8°C for up to 6 months. For long term storage, store at -20°C in small aliquots to prevent freeze-thaw cycles.

DESCRIPTION: ApoER2 (apolipoprotein E receptor 2), also designated LRP8, is a member of the LDL receptor gene family, which includes LDL receptor, LRP, megalin, VLDLR and ApoER2. The LDL receptor family is characterized by a cluster of cysteine-rich class A repeats, epidermal growth factor (EGF)-like repeats, YWTD repeats and an O-linked sugar domain. ApoER2 is expressed in brain and placenta and has several splice variants. ApoER2 is thought to mediate the interaction of extracellular Reelin and cytosolic mDab1 (mammalian disabled protein), which activates a tyrosine kinase. This pathway regulates the migration of neurons along the radial glial fiber network during brain development.

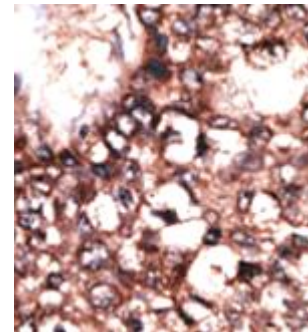
APPLICATION: Western blot: ~1:1000, IHC: ~1:50-1:100.

Note: This information is only intended as a guide. The optimal dilutions must be determined by the user.

FOR RESEARCH USE ONLY! Not to be used on humans.



The anti-LRP8 pAb (Cat. # 6721-100) is used in Western blot to detect LRP8 in placenta cell lysate.



Formalin-fixed and paraffin-embedded human cancer tissue reacted with APOE antibody (Cat # 6721-100), which was peroxidase-conjugated to the secondary antibody, followed by DAB staining. This data demonstrates the use of this antibody for immunohistochemistry; clinical relevance has not been evaluated.

RELATED PRODUCTS:

- ApoA1 Antibody (Cat # 5693-100)
- ApoA1 Antibody (Cat # 5695-100)
- ApoA1 Antibody (NT) (Cat # 6712-100)
- ApoA4 Antibody (NT) (Cat # 6713-100)
- ApoB Antibody (Cat # 3661-100)
- ApoA5 Antibody (NT) (Cat # 6717-100)
- ApoC2 Antibody (Center) (Cat # 6718-100)
- ApoD Antibody (NT) (Cat # 6719-100)
- ApoE Antibody (CT) (Cat # 6720-100)
- ApoE2 Antibody (Cat # 5760-100)
- ApoE3 Antibody (Cat # 5696-100)
- ApoE4 Antibody (Cat # 5699-100)
- ApoF Antibody (Center) (Cat # 6722-100)