

# ApoF Antibody (Center)

**ALTERNATE NAMES:** APOF; Apolipoprotein F; Lipid transfer inhibitor protein

**CATALOG #:** 6722-100

**AMOUNT:** 100 µl

**HOST/ISOTYPE:** Rabbit IgG

**IMMUNOGEN:** This APOF antibody is generated from rabbits immunized with a KLH conjugated synthetic peptide between 111-138 amino acids from the Central region of human APOF.

**PURIFICATION:** This antibody is purified through a protein A column, followed by peptide affinity purification.

**MOLECULAR WEIGHT:** ~35.4 kDa

**FORM:** Liquid

**FORMULATION:** Supplied in PBS with 0.09% (W/V) sodium azide.

**SPECIES REACTIVITY:** Human.

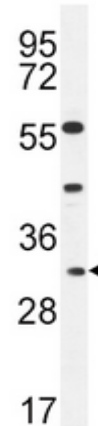
**STORAGE CONDITIONS:** Maintain refrigerated at 2-8°C for up to 6 months. For long term storage, store at -20°C in small aliquots to prevent freeze-thaw cycles.

**DESCRIPTION:** Apolipoproteins are a family of fatty-acid binding proteins that transport fat through the bloodstream in the form of lipoproteins. ApoF (apolipoprotein F), also known as LTIP (lipid transfer inhibitor protein), is a 308 amino acid secreted protein that belongs to the apolipoprotein family. Expressed in liver tissues and also existing in plasma, ApoF inhibits the activity of CETP (cholesteryl ester transfer protein) and, via this inhibition, functions to regulate cholesterol transport. The gene encoding ApoF maps to human chromosome 12, which encodes over 1,100 genes and comprises approximately 4.5% of the human genome. Chromosome 12 is associated with a variety of diseases and afflictions, including hypochondrogenesis, achondrogenesis, Kniest dysplasia, Noonan syndrome and Trisomy 12p, which causes facial developmental defects and seizure disorders.

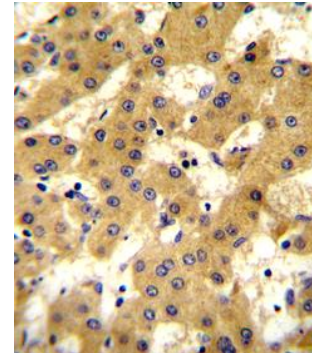
**APPLICATION:** Western blot: ~1:1000, IHC: ~1:10-1:50.

**Note:** This information is only intended as a guide. The optimal dilutions must be determined by the user.

**FOR RESEARCH USE ONLY! Not to be used on humans.**



APOF Antibody (Center) (Cat. # 6722-100) western blot analysis in CEM cell line lysates (35 µg/lane). This demonstrates the APOF antibody detected the APOF protein (arrow).



Formalin-fixed and paraffin-embedded human hepatocarcinoma tissue reacted with APOF antibody (Cat # 6722-100), which was peroxidase-conjugated to the secondary antibody, followed by DAB staining. This data demonstrates the use of this antibody for immunohistochemistry; clinical relevance has not been evaluated.

**RELATED PRODUCTS:**

- ApoA1 Antibody (Cat # 5693-100)
- ApoA1 Antibody (Cat # 5695-100)
- ApoA1 Antibody (NT) (Cat # 6712-100)
- ApoA4 Antibody (NT) (Cat # 6713-100)
- ApoB Antibody (Cat # 3661-100)
- ApoA5 Antibody (NT) (Cat # 6717-100)
- ApoC2 Antibody (Center) (Cat # 6718-100)
- ApoD Antibody (NT) (Cat # 6719-100)
- ApoE Antibody (CT) (Cat # 6720-100)
- ApoE2 Antibody (Cat # 5760-100)
- ApoE3 Antibody (Cat # 5696-100)
- ApoE4 Antibody (Cat # 5699-100)
- ApoER2 Antibody (CT) (Cat # 6721-100)

