

Catalase Antibody (Center)

ALTERNATE NAMES: CAT; Catalase

CATALOG #: 6727-100

AMOUNT: 100 µl

HOST/ISOTYPE: Rabbit IgG

IMMUNOGEN: This CAT antibody is generated from rabbits immunized with a KLH conjugated synthetic peptide between 152-180 amino acids from the Central region of human CAT.

PURIFICATION: This antibody is purified through a protein A column, followed by peptide affinity purification.

MOLECULAR WEIGHT: ~59.7 kDa

FORM: Liquid

FORMULATION: Supplied in PBS with 0.09% (W/V) sodium azide.

SPECIES REACTIVITY: Human. Predicted reactivity with Bovine, Mouse, Pig, Rat and Zebrafish samples.

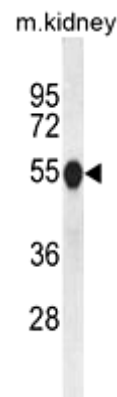
STORAGE CONDITIONS: Maintain refrigerated at 2-8°C for up to 6 months. For long term storage, store at -20°C in small aliquots to prevent freeze-thaw cycles.

DESCRIPTION: Catalase is a peroxisome specific marker protein belonging to the catalase family. Defects in the gene encoding for the catalase protein can cause acatalasia, a disease characterized by the absence of catalase activity in red cells and associated with ulcerating oral lesions. Catalase is also an important regulator of oxidative stress and inflammation, and may contribute to the development of rheumatoid arthritis. Catalase, which can form a homotetramer, is found in all nearly all aerobically respiring organisms and functions in protecting cells from the toxic effects of hydrogen peroxide.

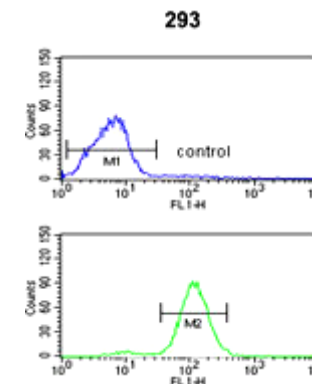
APPLICATION: Western blot: ~1:1000, IHC: ~1:50–1:100, FACS: ~1:10-1:50.

Note: This information is only intended as a guide. The optimal dilutions must be determined by the user.

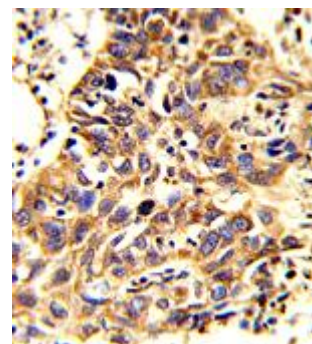
FOR RESEARCH USE ONLY! Not to be used on humans.



Western blot analysis with Mouse kidney tissue lysates (35 µg/lane). Catalase (arrow) was detected using the purified pAb.



CAT Antibody (Center)(Cat. #6727) flow cytometric analysis of 293 cells (bottom histogram) compared to a negative control cell (top histogram). FITC-conjugated goat-anti-rabbit secondary antibodies were used for the analysis.



Formalin-fixed and paraffin-embedded human lung carcinoma reacted with Catalase antibody (Cat # 6727-100), which was peroxidase-conjugated to the secondary antibody, followed by DAB staining. This data demonstrates the use of this antibody for immunohistochemistry; clinical relevance has not been evaluated.

RELATED PRODUCTS:

- Catalase Antibody (Cat # 3806-100)
- Catalase Blocking Peptide (Cat # 3806BP-50)
- Catalase, Human Erythrocytes (Cat # 4712-1000)
- Catalase, human recombinant (Cat # 7362-100)
- Catalase Activity Colorimetric/Fluorometric Assay Kit (Cat # K773-100)

