

CBS Antibody (NT)

ALTERNATE NAMES: CBS; Cystathionine beta-synthase; Beta-thionase; Serine sulfhydrase

CATALOG #: 6729-100

AMOUNT: 100 µl

HOST/ISOTYPE: Rabbit IgG

IMMUNOGEN: This CBS antibody is generated from rabbits immunized with a KLH conjugated synthetic peptide between 104-133 amino acids from the N-terminal region of human CBS.

PURIFICATION: This antibody is purified through a protein A column, followed by peptide affinity purification.

MOLECULAR WEIGHT: ~60.5 kDa

FORM: Liquid

FORMULATION: Supplied in PBS with 0.09% (W/V) sodium azide.

SPECIES REACTIVITY: Human and mouse. Predicted reactivity with monkey samples.

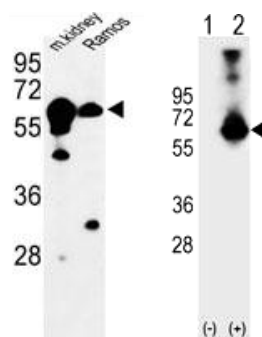
STORAGE CONDITIONS: Maintain refrigerated at 2-8°C for up to 6 months. For long term storage, store at -20°C in small aliquots to prevent freeze-thaw cycles.

DESCRIPTION: Strongly expressed in human liver and pancreas, with weaker expression in heart and brain, the cytoplasmic protein cystathionine b-synthase (CBS) operates in the first step of homocysteine transulfuration. CBS, which belongs to the cysteine synthase/cystathionine b-synthase family of proteins, catalyzes the formation of cystathionine from the thrombogenic amino acid homocysteine using pyridoxal phosphate cofactor. Allosteric activation by adenosyl-methionine regulates CBS activity. Deficiencies in CBS are associated with homocystinuria, a recessively inherited error in sulfur amino acid metabolism that affects many organs and tissues. Symptoms of homocystinuria include arteriosclerosis, thrombosis, dislocated optic lenses, mental retardation and skeletal abnormalities.

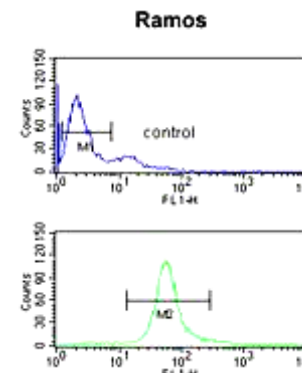
APPLICATION: Western blot: ~1:1000, IHC: ~1:50–1:100, IF: ~1:10–1:50, FACS: ~1:10-1:50.

Note: This information is only intended as a guide. The optimal dilutions must be determined by the user.

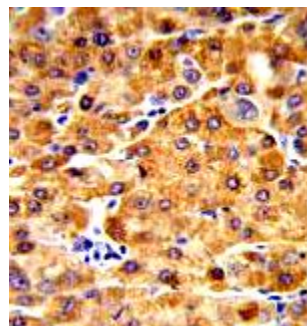
FOR RESEARCH USE ONLY! Not to be used on humans.



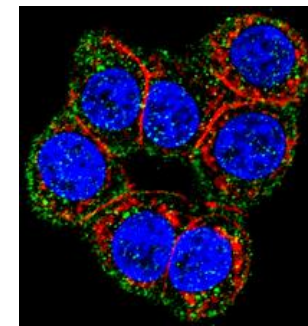
Western blot analysis with Raji cell line, rat brain and cerebellum tissue lysates (35 µg/lane). CBS (arrow) was detected using the purified pAb.



CBS Antibody (Center)(Cat. #6729) flow cytometric analysis of Ramos cells (bottom histogram) compared to a negative control cell (top histogram).FITC-conjugated goat-anti-rabbit secondary antibodies were used for the analysis.



Formalin-fixed and paraffin-embedded human hepatocarcinoma reacted with CBS antibody (Cat # 6729-100), which was peroxidase-conjugated to the secondary antibody, followed by DAB staining. This data demonstrates the use of this antibody for immunohistochemistry; clinical relevance has not been evaluated.



Confocal immunofluorescent analysis of CBS Antibody (NT) (Cat # 6729) with 293 cell followed by Alexa Fluor 488-conjugated goat anti-rabbit IgG (green). Actin filaments have been labeled with Alexa Fluor 555 phalloidin (red).DAPI was used to stain the cell nuclear (blue).

RELATED PRODUCTS:

- CBS Antibody (Center) (Cat # 6728-100)

