

CCL2 Antibody (CT)

ALTERNATE NAMES: CCL2; MCP1; SCYA2; C-C motif chemokine 2; HC11; Monocyte chemoattractant protein 1; Monocyte chemotactic and activating factor; Monocyte chemotactic protein 1; Monocyte secretory protein JE; Small-inducible cytokine A2

CATALOG #: 6730-100

AMOUNT: 100 µl

HOST/ISOTYPE: Rabbit IgG

IMMUNOGEN: This CCL2 antibody is generated from rabbits immunized with a KLH conjugated synthetic peptide between 62-89 amino acids from the C-terminal region of human CCL2.

PURIFICATION: This antibody is prepared by Saturated Ammonium Sulfate (SAS) precipitation followed by dialysis against PBS.

MOLECULAR WEIGHT: ~11.02 kDa

FORM: Liquid

FORMULATION: Supplied in PBS with 0.09% (W/V) sodium azide.

SPECIES REACTIVITY: Human. Predicted reactivity with monkey samples.

STORAGE CONDITIONS: Maintain refrigerated at 2-8°C for up to 6 months. For long term storage, store at -20°C in small aliquots to prevent freeze-thaw cycles.

DESCRIPTION: CCL2 is one of several cytokine genes clustered on the q-arm of chromosome 17. It is structurally related to the CXC subfamily of cytokines. Members of this subfamily are characterized by two cysteines separated by a single amino acid. CCL2 displays chemotactic activity for monocytes and basophils but not for neutrophils or eosinophils. It has been implicated in the pathogenesis of diseases characterized by monocytic infiltrates, like psoriasis, rheumatoid arthritis and atherosclerosis. It binds to chemokine receptors CCR2 and CCR4.

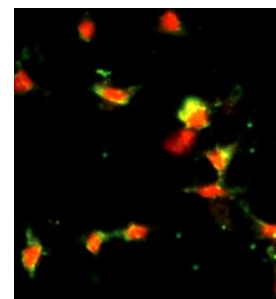
APPLICATION: Western blot: ~1:1000, IHC: ~1:10–1:50, IF: ~1:10–1:50, FACS: ~1:10-1:50.

Note: This information is only intended as a guide. The optimal dilutions must be determined by the user.

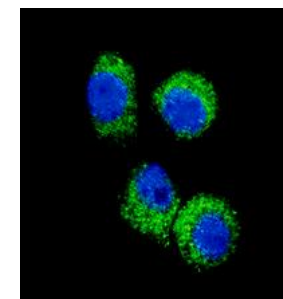
FOR RESEARCH USE ONLY! Not to be used on humans.



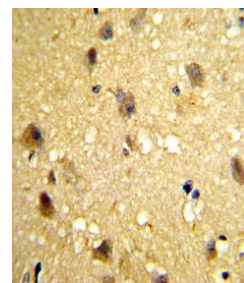
Western blot analysis with HeLa cell lysates (35 µg/lane).



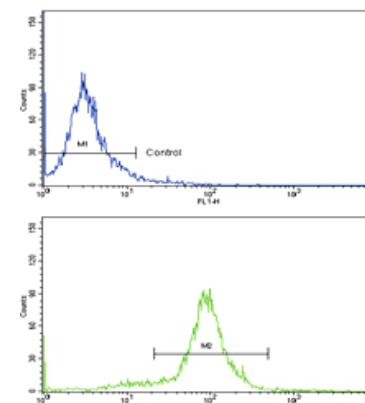
IF analysis of HeLa cells followed by FITC-conjugated goat anti-rabbit IgG (whole molecule). FITC emits green fluorescence. Red counterstaining is PI.



Confocal IF analysis on HeLa cells followed by Alexa Fluor 488-conjugated goat anti-rabbit IgG (green). DAPI was used to stain the cell nuclear (blue).



Formalin-fixed and paraffin-embedded human brain tissue reacted with CCL2 antibody which was peroxidase-conjugated to the secondary antibody, followed by DAB staining.



FACS of HeLa cells using CCL2 Antibody (bottom histogram) compared to a negative control cell (top histogram). FITC-conjugated goat-anti-rabbit secondary antibodies were used for the analysis.

RELATED PRODUCTS:

- CCL4 Antibody (Center) (Cat # 6731-100)
- MCP-1 (MCAF), human recombinant (Cat # 4222-20, -100, -1000)
- MCP-1 (MCAF), rat recombinant (Cat # 4224-10, -1000)
- MCP-2, human recombinant (Cat # 4225-10, -1000)
- MCP-2, murine recombinant (Cat # 4226-10, -1000)
- MCP-3, human recombinant (Cat # 4228-10, -1000)
- MCP-3, murine recombinant (Cat # 4229-10, -1000)
- MCP-4, human recombinant (Cat # 4231-10, -1000)

