

CCL4 Antibody (Center)

ALTERNATE NAMES: CCL4; LAG1; MIP1B; SCYA4; C-C motif chemokine 4; G-26 T-lymphocyte-secreted protein; HC21; Lymphocyte activation gene 1 protein; MIP-1-beta(1-69); Macrophage inflammatory protein 1-beta; PAT 744; Protein H400; SIS-gamma; Small-inducible cytokine A4; T-cell activation protein 2.

CATALOG #: 6731-100

AMOUNT: 100 µl

HOST/ISOTYPE: Rabbit IgG

IMMUNOGEN: This CCL4 antibody is generated from rabbits immunized with a KLH conjugated synthetic peptide between 22-48 amino acids from the Central region of human CCL4.

PURIFICATION: This antibody is purified through a protein A column, followed by peptide affinity purification.

MOLECULAR WEIGHT: ~10.2 kDa

FORM: Liquid

FORMULATION: Supplied in PBS with 0.09% (W/V) sodium azide.

SPECIES REACTIVITY: Human and Mouse.

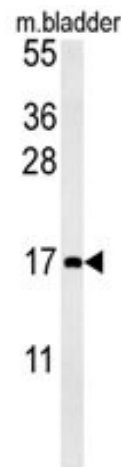
STORAGE CONDITIONS: Maintain refrigerated at 2-8°C for up to 6 months. For long term storage, store at -20°C in small aliquots to prevent freeze-thaw cycles.

DESCRIPTION: CCL4 is a member of the CC- subfamily of chemokines and is most closely related to CCL3, or MIP-1 alpha. These proteins play critical roles in the recruitment of leukocytes to the site of inflammation. In addition to its chemotactic functions, CCL4 induces the release of proinflammatory cytokine, mast cells degranulation, and NK cell activation. CCL4 signaling is mediated by the G protein-coupled receptors CCR1, CCR4, and CCR5, which are shared with CCL3 and CCL5 (RANTES). CCR5 is the primary co-receptor for HIV entry, which the virus binds through the gp120 envelope protein. All CCR5 ligands demonstrate potent inhibition of virus entry into the cell, both through steric hindrance of gp120-CCR5 interaction, and ligand-mediated receptor internalization.

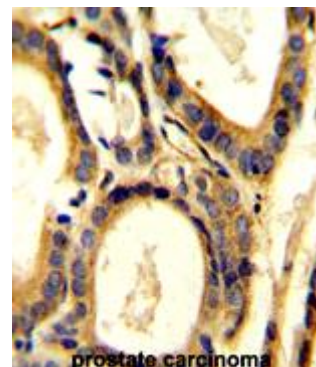
APPLICATION: Western blot: ~1:1000, IHC: ~1:10–1:50.

Note: This information is only intended as a guide. The optimal dilutions must be determined by the user.

FOR RESEARCH USE ONLY! Not to be used on humans.



CCL4 Antibody (Center) (Cat. # 6731-100) western blot analysis in mouse bladder tissue lysates (15 µg/lane). This demonstrates the CCL4 antibody detected CCL4 protein (arrow).



CCL4 Antibody (Center) (Cat. # 6731-100) immunohistochemistry analysis in formalin fixed and paraffin embedded human prostate carcinoma followed by peroxidase conjugation of the secondary antibody and DAB staining. This data demonstrates the use of the CCL4 Antibody (Center) for immunohistochemistry. Clinical relevance has not been evaluated.

RELATED PRODUCTS:

- CCL2 Antibody (CT) (Cat # 6730-100)
- MCP-1 (MCAF), human recombinant (Cat # 4222-20, -100, -1000)
- MCP-1 (MCAF), rat recombinant (Cat # 4224-10, -1000)
- MCP-2, human recombinant (Cat # 4225-10, -1000)
- MCP-2, murine recombinant (Cat # 4226-10, -1000)
- MCP-3, human recombinant (Cat # 4228-10, -1000)
- MCP-3, murine recombinant (Cat # 4229-10, -1000)
- MCP-4, human recombinant (Cat # 4231-10, -1000)

