

# LDHA Antibody (Center)

**ALTERNATE NAMES:** LDHA; L-lactate dehydrogenase A chain; Cell proliferation-inducing gene 19 protein; LDH muscle subunit; Renal carcinoma antigen NY-REN-59.

**CATALOG #:** 6736-100

**AMOUNT:** 100 µl

**HOST/ISOTYPE:** Rabbit IgG

**IMMUNOGEN:** This LDHA antibody is generated from rabbits immunized with a KLH conjugated synthetic peptide between 154-182 amino acids from the Central region of human LDHA.

**PURIFICATION:** This antibody is purified through a protein A column, followed by peptide affinity purification.

**MOLECULAR WEIGHT:** ~36.68 kDa

**FORM:** Liquid

**FORMULATION:** Supplied in PBS with 0.09% (W/V) sodium azide.

**SPECIES REACTIVITY:** Human. Predicted cross reactivity with monkey, pig, rat and bovine samples.

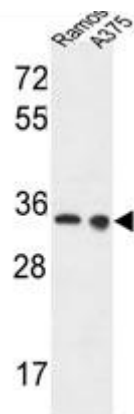
**STORAGE CONDITIONS:** Maintain refrigerated at 2-8°C for up to 6 months. For long term storage, store at -20°C in small aliquots to prevent freeze-thaw cycles.

**DESCRIPTION:** L-Lactate dehydrogenase A chain (LDHA) is a member of the LDH/MDH superfamily and LDH family. It catalyzes the conversion of L-lactate and NAD to pyruvate and NADH in the final step of anaerobic glycolysis. LDHA is localized primarily in muscle tissue and is part of the lactate dehydrogenase family. Mutations in LDHA have been linked to exertional myoglobinuria. LDH1 is decreased in essential thrombocythemia. LDHA is induced through a non-genomic pathway of estrogen action. Reduction in LDH-A activity results in stimulation of mitochondrial respiration and decrease of mitochondrial membrane potential. Mutations in LDHA have been associated with in LDHA are the cause of glycogen storage disease type 11 (GSD11) which is a metabolic disorder that results in exertional myoglobinuria, pain, cramps and easy fatigue.

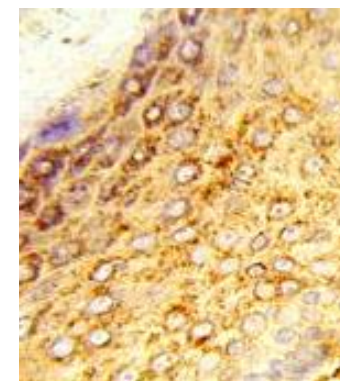
**APPLICATION:** Western blot: ~1:1000, IHC: ~1:50–1:100, FACS: ~1:10-1:50.

**Note:** This information is only intended as a guide. The optimal dilutions must be determined by the user.

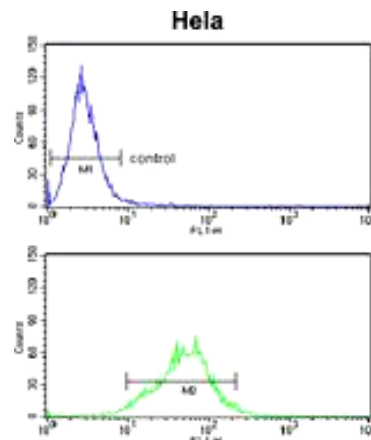
**FOR RESEARCH USE ONLY! Not to be used on humans.**



LDHA Antibody (Center) (Cat. # 6736-100) western blot analysis in Ramos and A375 cell line lysates (35 µg/lane). This demonstrates the LDHA antibody detected the LDHA protein (arrow).



Formalin-fixed and paraffin-embedded human skin tissue reacted with LDHA antibody (Center) (Cat # 6736-100), which was peroxidase-conjugated to the secondary antibody, followed by DAB staining.



LDHA Antibody (Center) (Cat. # 6736) flow cytometry analysis of HeLa cells (bottom histogram) compared to a negative control cell (top histogram). FITC-conjugated goat-anti-rabbit secondary antibodies were used for the analysis.

**RELATED PRODUCTS:**

- LDHA Antibody (CT) (Cat # 6735-100)
- LDHAL6B Antibody (NT) (Cat # 6737-100)
- Human Recombinant LDHA (Cat # 6374-100)

