

Aldolase A (ALDOA) Antibody (NT)

ALTERNATE NAMES: ALDOA; ALDA; Fructose-bisphosphate aldolase A; Lung cancer antigen NY-LU-1; Muscle-type aldolase.

CATALOG #: 6753-100

AMOUNT: 100 µl

HOST/ISOTYPE: Rabbit IgG

IMMUNOGEN: This Aldolase (ALDOA) antibody is generated from rabbits immunized with a KLH conjugated synthetic peptide between 66-95 amino acids from the N-terminal region of human Aldolase (ALDOA).

PURIFICATION: This antibody is prepared by Saturated Ammonium Sulfate (SAS) precipitation followed by dialysis against PBS.

MOLECULAR WEIGHT: ~39.42 kDa

FORM: Liquid

FORMULATION: Supplied in PBS with 0.09% (W/V) sodium azide.

SPECIES REACTIVITY: Human. Predicted cross reactivity with mouse, rat and rabbit samples.

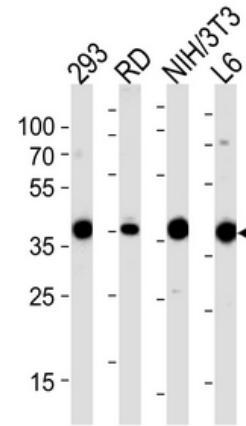
STORAGE CONDITIONS: Maintain refrigerated at 2-8°C for up to 6 months. For long term storage, store at -20°C in small aliquots to prevent freeze-thaw cycles.

DESCRIPTION: Fructose bisphosphate aldolase A, also known as Aldolase A is a glycolytic enzyme that catalyzes the reversible conversion of fructose-1,6-bisphosphate to glyceraldehyde 3-phosphate and dihydroxyacetone phosphate. It is found in the developing embryo and is produced in even greater amounts in adult muscle. Aldolase A expression is repressed in adult liver, kidney and intestine and similar to aldolase C levels in brain and other nervous tissue. Deficiency has been associated with myopathy and hemolytic anemia. Recombinant human Aldolase A, fused to His-tag at N-terminus, was expressed in E.coli and purified by using conventional chromatography techniques.

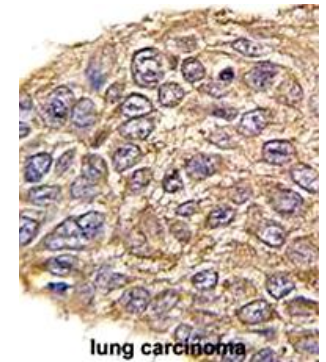
APPLICATION: Western blot: ~1:1000, IHC: ~1:10-1:50, IF: ~1:10-1:50.

Note: This information is only intended as a guide. The optimal dilutions must be determined by the user.

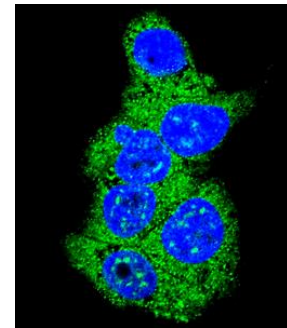
FOR RESEARCH USE ONLY! Not to be used on humans.



Western blot analysis of lysates from 293, RD, mouse NIH/3T3, rat L6 cell line (from left to right). A goat anti-rabbit IgG H&L(HRP) at 1:5000 dilution was used as the secondary antibody. Lysates at 35 µg per lane.



Formalin-fixed and paraffin-embedded human lung carcinoma reacted with ALDOA antibody, which was peroxidase-conjugated to the secondary antibody, followed by DAB staining.



Confocal immunofluorescent analysis with HepG2 cells followed by Alexa Fluor 488-conjugated goat anti-rabbit IgG (green). DAPI was used to stain the cell nuclear (blue).

RELATED PRODUCTS:

- Aldolase A, human recombinant (Cat. No. 7359-100)
- ALDOA Antibody (CT) (Cat. No. 6754-100)
- ALDOC Antibody (CT) (Clone 859CT9.5.3) (Cat. No. 6755-100)
- ALDOC Antibody (CT) (Cat. No. 6756-100)
- ALDOC Antibody (NT) (Cat. No. 6757-100)
- Aldolase Activity Colorimetric Assay Kit (Cat. No. K665-100)

