

## Aldolase A (ALDOA) Antibody (CT)

**ALTERNATE NAMES:** ALDOA; ALDA; Fructose-bisphosphate aldolase A; Lung cancer antigen NY-LU-1; Muscle-type aldolase.

**CATALOG #:** 6754-100

**AMOUNT:** 100 µl

**HOST/ISOTYPE:** Rabbit IgG

**IMMUNOGEN:** This ALDOA antibody is generated from rabbits immunized with a KLH conjugated synthetic peptide between 303-331 amino acids from the C-terminal region of human ALDOA.

**PURIFICATION:** This antibody is prepared by Saturated Ammonium Sulfate (SAS) precipitation followed by dialysis against PBS.

**MOLECULAR WEIGHT:** ~39.42 kDa

**FORM:** Liquid

**FORMULATION:** Supplied in PBS with 0.09% (W/V) sodium azide.

**SPECIES REACTIVITY:** Human and mouse. Predicted cross reactivity with rabbit samples.

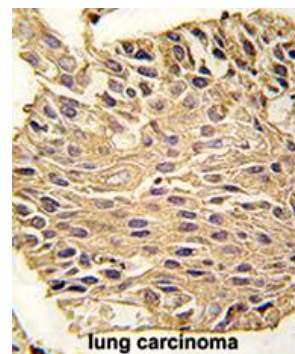
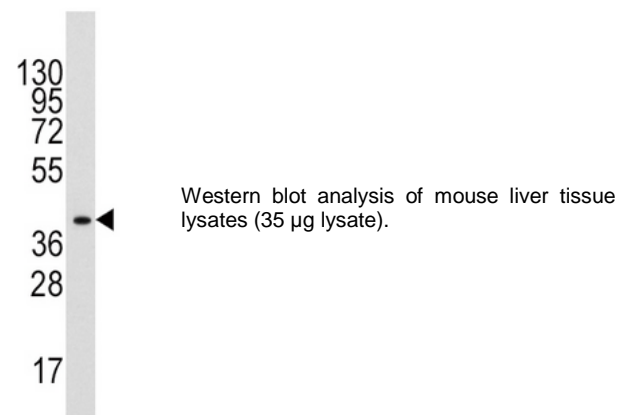
**STORAGE CONDITIONS:** Maintain refrigerated at 2-8°C for up to 6 months. For long term storage, store at -20°C in small aliquots to prevent freeze-thaw cycles.

**DESCRIPTION:** Fructose bisphosphate aldolase A, also known as Aldolase A is a glycolytic enzyme that catalyzes the reversible conversion of fructose-1,6-bisphosphate to glyceraldehyde 3-phosphate and dihydroxyacetone phosphate. It is found in the developing embryo and is produced in even greater amounts in adult muscle. Aldolase A expression is repressed in adult liver, kidney and intestine and similar to aldolase C levels in brain and other nervous tissue. Deficiency has been associated with myopathy and hemolytic anemia. Recombinant human Aldolase A, fused to His-tag at N-terminus, was expressed in E.coli and purified by using conventional chromatography techniques.

**APPLICATION:** Western blot: ~1:1000, IHC: ~1:10-1:50.

**Note:** This information is only intended as a guide. The optimal dilutions must be determined by the user.

**FOR RESEARCH USE ONLY! Not to be used on humans.**



Formalin-fixed and paraffin-embedded human lung carcinoma reacted with ALDOA antibody, which was peroxidase-conjugated to the secondary antibody, followed by DAB staining.

### RELATED PRODUCTS:

- Aldolase A, human recombinant (**Cat. No. 7359-100**)
- ALDOA Antibody (NT) (**Cat. No. 6753-100**)
- ALDOC Antibody (CT) (Clone 859CT9.5.3) (**Cat. No. 6755-100**)
- ALDOC Antibody (CT) (**Cat. No. 6756-100**)
- ALDOC Antibody (NT) (**Cat. No. 6757-100**)
- Aldolase Activity Colorimetric Assay Kit (**Cat. No. K665-100**)