

Aldolase C (ALDOC) Antibody (CT) Clone # 859CT9.5.3

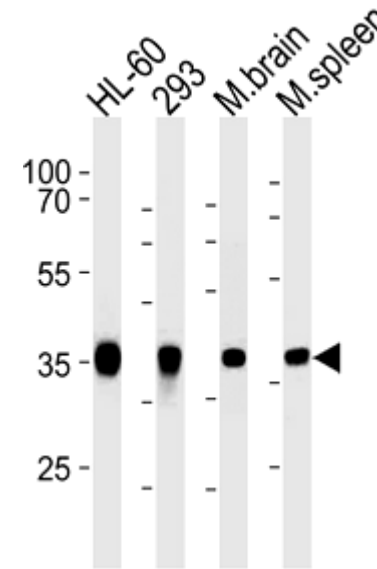
ALTERNATE NAMES:	ALDOC; ALDC; Fructose-bisphosphate aldolase C; Fructose-bisphosphate aldolase C; Brain-type aldolase
CATALOG #:	6755-100
AMOUNT:	100 µl
HOST/ISOTYPE:	Mouse IgG3
IMMUNOGEN:	Purified His-tagged ALDOC protein was used to produce this monoclonal antibody.
PURIFICATION:	This antibody is prepared by Euglobin precipitation followed by dialysis against PBS.
MOLECULAR WEIGHT:	~39.45 kDa
FORM:	Liquid
FORMULATION:	Supplied in PBS with 0.09% (W/V) sodium azide.
SPECIES REACTIVITY:	Human and mouse.
STORAGE CONDITIONS:	Maintain refrigerated at 2-8°C for up to 6 months. For long term storage, store at -20°C in small aliquots to prevent freeze-thaw cycles.

DESCRIPTION: Fructose 1, 6-bisphosphate aldolase catalyses the reversible condensation of glyceraldehyde 3-phosphate and dihydroxyacetone phosphate into fructose 1, 6-bisphosphate. Fructose 1, 6-bisphosphate aldolase exists as three forms, the muscle-specific Aldolase A, the liver-specific aldolase B, and the brain-specific aldolase C. Aldolase A, B, and C arose from a common ancestral gene, from which aldolase B first diverged. Aldolase A is one of the most highly conserved enzymes known, with only about 2% of the residues changing per 100 million years. Aldolase B is regulated by the hormones insulin and glucagon and has been implicated in hereditary fructose intolerance disease. Aldolase C is a polypeptide that is exclusively expressed in Purkinje cells. Aldolase C-positive Purkinje cells are organized in the cerebellum as stripes or bands that run from anterior to posterior across the cerebellum and alternate with bands of Aldolase C-negative Purkinje cells.

APPLICATION: Western blot: ~1:1000.

Note: This information is only intended as a guide. The optimal dilutions must be determined by the user.

FOR RESEARCH USE ONLY! Not to be used on humans.



Western blot analysis of HL-60,293 cell line and mouse brain, spleen lysates (35 µg/lane).

RELATED PRODUCTS:

- Aldolase A, human recombinant (Cat. No. 7359-100)
- ALDOA Antibody (NT) (Cat. No. 6753-100)
- ALDOA Antibody (CT) (Cat. No. 6754-100)
- ALDOC Antibody (CT) (Cat. No. 6756-100)
- ALDOC Antibody (NT) (Cat. No. 6757-100)
- Aldolase Activity Colorimetric Assay Kit (Cat. No. K665-100)