

ApoJ/Clusterin Antibody (NT)

ALTERNATE NAMES: TRPM-2, Apolipoprotein J, APO-J, CLI, CLU, SGP-2, AAG4, KUB1, SGP2, SP-40, TRPM2, MGC24903.

CATALOG #: 6758-100

AMOUNT: 100 µl

HOST/ISOTYPE: Rabbit IgG

IMMUNOGEN: This CLU antibody is generated from rabbits immunized with a KLH conjugated synthetic peptide between 71-99 amino acids from the N-terminal region of human CLU.

PURIFICATION: This antibody is purified through a protein A column, followed by peptide affinity purification.

MOLECULAR WEIGHT: ~52.49 kDa

FORM: Liquid

FORMULATION: Supplied in PBS with 0.09% (W/V) sodium azide.

SPECIES REACTIVITY: Human.

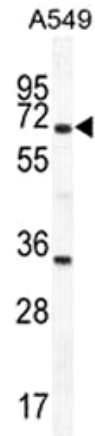
STORAGE CONDITIONS: Maintain refrigerated at 2-8°C for up to 6 months. For long term storage, store at -20°C in small aliquots to prevent freeze-thaw cycles.

DESCRIPTION: Native Apolipoprotein J (ApoJ), also named Clusterin, is a heavily glycosylated, 75-80 kDa disulfide-linked heterodimeric protein. Despite being cloned since 1989, no genuine function has been attributed to ApoJ so far. The protein has been reportedly implicated in several diverse physiological processes such as sperm maturation, lipid transportation, complement inhibition, tissue remodeling, membrane recycling, cell-cell and cell-substratum interactions, stabilization of stressed proteins in a folding-competent state and promotion or inhibition of apoptosis. ApoJ gene is differentially regulated by cytokines, growth factors and stress-inducing agents. Clusterin is up- or down regulated on the mRNA or protein level in many pathological and clinically relevant situations including cancer, organ regeneration, infection, Alzheimer disease, retinitis pigmentosa, myocardial infarction, renal tubular damage, autoimmunity and others.

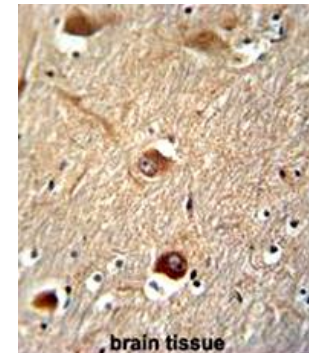
APPLICATION: Western blot: ~1:1000, IHC: ~1:50-1:100, FACS: ~1:10-1:50.

Note: This information is only intended as a guide. The optimal dilutions must be determined by the user.

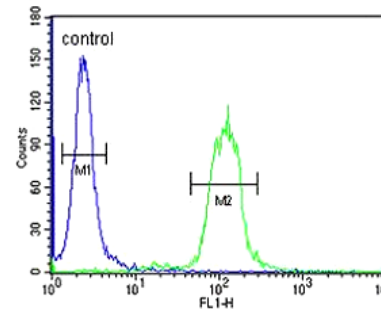
FOR RESEARCH USE ONLY! Not to be used on humans.



Western blot analysis of A549 cell lysate (35 µg protein).



Formalin-fixed and paraffin-embedded human brain tissue reacted with CLU antibody, which was peroxidase-conjugated to the secondary antibody, followed by DAB staining.



CLU Antibody flow cytometric analysis of A549 cells (right histogram) compared to a negative control cell (left histogram). FITC-conjugated goat-anti-rabbit secondary antibodies were used for the analysis.

RELATED PRODUCTS:

- ApoJ / Clusterin, human recombinant (7584-10, -50, -1000)
- ApoJ / Clusterin, mouse recombinant (7554-10, -50)
- Human CellExp™ ApoJ / Clusterin, human recombinant (7459-10, -50)
- ApoJ / Clusterin, human plasma (4325-10, -500)
- Apolipoprotein CI, Human Plasma (Cat # 4703-100)
- Apolipoprotein CII, Human Plasma (Cat # 4704-50)
- Apolipoprotein CIII, Human Plasma (Cat # 4706-100)