

ANGPTL1 Antibody (NT)

ALTERNATE NAMES: ANGPTL1; ANG3; ANGPT3; ARP1; Angiopoietin-related protein 1; Angiopoietin-3; Angiopoietin-like protein 1

CATALOG #: 6761-100

AMOUNT: 100 µl

HOST/ISOTYPE: Rabbit IgG

IMMUNOGEN: This ANGPTL1 antibody is generated from rabbits immunized with a KLH conjugated synthetic peptide between 12-44 amino acids from the N-terminal region of human ANGPTL1.

PURIFICATION: This antibody is purified through a protein A column, followed by peptide affinity purification.

MOLECULAR WEIGHT: ~56.72 kDa

FORM: Liquid

FORMULATION: Supplied in PBS with 0.09% (W/V) sodium azide.

SPECIES REACTIVITY: Human.

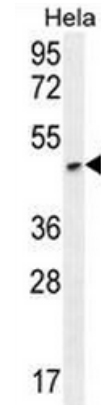
STORAGE CONDITIONS: Maintain refrigerated at 2-8°C for up to 6 months. For long term storage, store at -20°C in small aliquots to prevent freeze-thaw cycles.

DESCRIPTION: Angptl1 (angiopoietin-like 1), also known as angioarrestin, ARP1, ANGPT3 or previously known as angiopoietin 3 (ANG3), is a member of the angiopoietin-like family. It is highly expressed in adult tissues, particularly adrenal gland, thyroid, placenta and small intestine. Angptl1 exists as a disulfide-linked dimer and shares 45.1% identity with Ang-1 and 59% identity with Angptl2. Angptl1 consists of an N-terminus with a coiled-coil domain, potential glycosylation sites and a C-terminus with a fibrinogen-like domain. It is a secreted protein but does not function as a growth factor in endothelial cells. Angptl1 plays a distinct role in the regulation of angiogenesis; inhibiting proliferation, migration, tube formation and endothelial cell adhesion. To exert this inhibitory activity, Angptl1 is speculated to interact with a receptor on endothelial cells. In a wide variety of tumor tissues, Angptl1 expression is down-regulated suggesting that a major function of this protein involves its antiangiogenic properties.

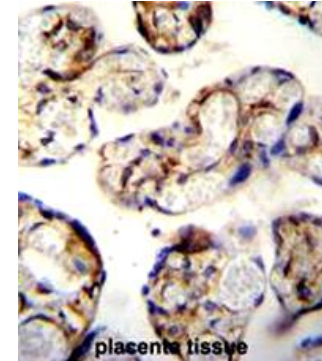
APPLICATION: Western blot: ~1:1000, IHC: ~1:50-1:100, FACS: ~1:10–1:50.

Note: This information is only intended as a guide. The optimal dilutions must be determined by the user.

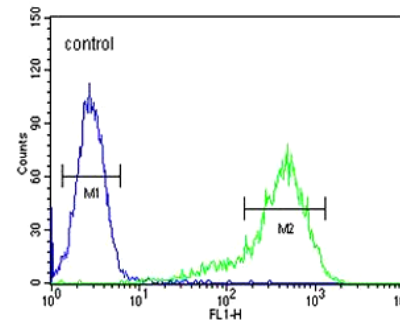
FOR RESEARCH USE ONLY! Not to be used on humans.



Western blot analysis of HeLa cell line lysate. (35 µg protein).



Formalin-fixed and paraffin-embedded human placenta tissue reacted with ANGPTL1 antibody, which was peroxidase-conjugated to the secondary antibody, followed by DAB staining.



ANGPTL1 Antibody flow cytometric analysis of HeLa cells (right histogram) compared to a negative control cell (left histogram). FITC-conjugated goat-anti-rabbit secondary antibodies were used for the analysis.

RELATED PRODUCTS:

- ANG-1, human recombinant (Cat. No. 7115-10, -50)
- Human CellExp™ Angiopoietin-2, human recombinant (Cat. No. 7395-10, -50)
- Angiopoietin-2, mouse recombinant (Cat. No. 7555-10)
- ANG-2, human recombinant (Cat. No. 7116-10, -50)
- ANGPTL3 (human) Serum ELISA Kit (Cat. No. K4914-100)
- ANGPTL3 (mouse/rat) Serum ELISA Kit (Cat. No. K4915-100)
- ANGPTL6 (human) Serum ELISA Kit (Cat. No. K4916-100)
- Angiopoietin-1 (human) ELISA Kit (Cat. No. K7115-100)
- Angiopoietin-2 (human) ELISA Kit (Cat. No. K7116-100)