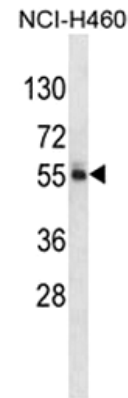


FTO Antibody (NT)

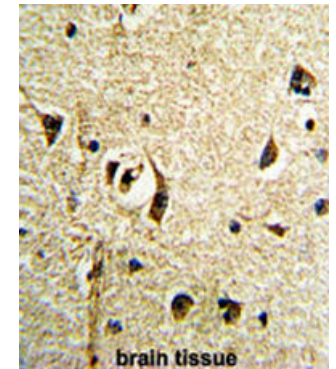
ALTERNATE NAMES:	FTO; KIAA1752; Alpha-ketoglutarate-dependent dioxygenase FTO; Fat mass and obesity-associated protein.
CATALOG #:	6764-100
AMOUNT:	100 µl
HOST/ISOTYPE:	Rabbit IgG
IMMUNOGEN:	This FTO antibody is generated from rabbits immunized with a KLH conjugated synthetic peptide between 1-30 amino acids from the N-terminal region of human FTO.
PURIFICATION:	This antibody is purified through a protein A column, followed by peptide affinity purification.
MOLECULAR WEIGHT:	~58.28 kDa
FORM:	Liquid
FORMULATION:	Supplied in PBS with 0.09% (W/V) sodium azide.
SPECIES REACTIVITY:	Human.
STORAGE CONDITIONS:	Maintain refrigerated at 2-8°C for up to 6 months. For long term storage, store at -20°C in small aliquots to prevent freeze-thaw cycles.
DESCRIPTION:	FTO (Fat mass-and obesity-associated gene) is the responsible gene for mouse 'fused toes' mutation. An association between FTO genotype and type 2 diabetes has been confirmed. The presence of the FTO rs9939609 A-allele was found to be positively correlated with other symptoms of the metabolic syndrome, including higher fasting insulin, glucose, triglycerides, and lower HDL-cholesterol.
APPLICATION:	Western blot: ~1:1000, IHC: ~1:50-1:100, FACS: ~1:10-1:50.

Note: This information is only intended as a guide. The optimal dilutions must be determined by the user.

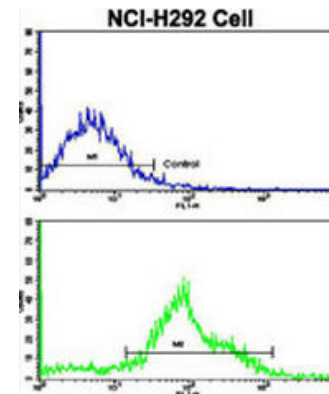
FOR RESEARCH USE ONLY! Not to be used on humans.



Western blot analysis of NCI-H460 cell line lysate. (35 µg protein).



Formalin-fixed and paraffin-embedded human brain tissue reacted with FTO antibody, which was peroxidase-conjugated to the secondary antibody, followed by DAB staining.



Flow cytometric analysis of NCI-H292 cells using FTO Antibody (bottom histogram) compared to a negative control cell (top histogram). FITC-conjugated goat-anti-rabbit secondary antibodies were used for the analysis.

RELATED PRODUCTS:

- FTO, human recombinant (Cat. No. 7557-10)
- FTO, mouse recombinant (Cat. No. 7558-10)
- FTO Antibody (Clone FT86-4) (Cat. No. 6699-50)
- FTO (human intracellular) ELISA Kit (Cat. No. K4921-100)
- FTO (mouse intracellular) ELISA Kit (Cat. No. K4922-100)