

Vimentin Antibody (CT)

ALTERNATE NAMES: CTRCT30, Epididymis luminal protein 113, FLJ36605, HEL113, VIM.

CATALOG #: 6771-100

AMOUNT: 100 µl

HOST/ISOTYPE: Rabbit

IMMUNOGEN: This Vimentin antibody is generated from rabbits immunized with a KLH conjugated synthetic peptide between 430-457 amino acids from the C-terminal region of human Vimentin.

MOLECULAR WEIGHT: ~53.652 kDa

FORM: Liquid

FORMULATION: In PBS with 0.09% (W/V) sodium azide.

PURIFICATION: This antibody is prepared by Saturated Ammonium Sulfate (SAS) precipitation followed by dialysis against PBS.

SPECIES REACTIVITY: Human. Predicted reactivity with Mouse, Rat, Bovine, Chicken, Hamster, Pig, Monkey, Xenopus samples.

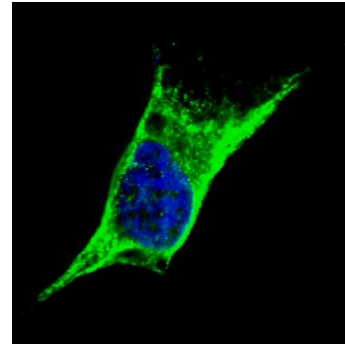
STORAGE CONDITIONS: Maintain refrigerated at 2-8°C for up to 6 months. For long term storage, store at -20°C in small aliquots to prevent freeze-thaw cycles.

DESCRIPTION: Cytoskeletal intermediate filaments (IFs) constitute a diverse group of proteins that are expressed in a highly tissue-specific manner. Intermediate filaments are constructed from two-chain, α-helical, coiled-coil molecules arranged on an imperfect helical lattice and have been widely used as markers for distinguishing individual cell types within a tissue and identifying the origins of metastatic tumors. One such intermediate filament protein, Vimentin, is a general marker of cells originating in the mesenchyme. Vimentin is frequently co-expressed with other members of the intermediate filament family, such as the cytokeratins, in neoplasms including melanoma and breast carcinoma.

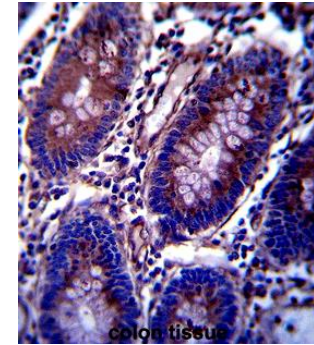
APPLICATION: Western blot: ~1:1000, IHC: 1:10 – 1:50, FACS: 1:10 – 1:50, IF: 1:100.

Note: This information is only intended as a guide. The optimal dilutions must be determined by the user.

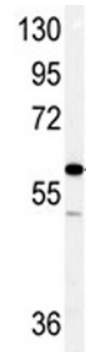
FOR RESEARCH USE ONLY! Not to be used on humans.



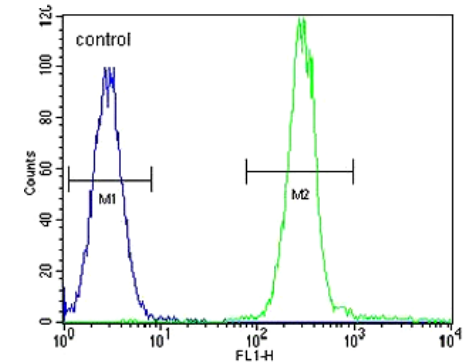
Fluorescent confocal image of SY5Y cells stained with Vimentin (C-term) antibody. Cells were incubated with Vimentin (C-term) antibody (1:100, 2 h at RT). For secondary antibody, Alexa Fluor® 488 conjugated donkey anti-rabbit antibody (green) was used (1:1000, 1h). Nuclei were counterstained with Hoechst 33342 (blue) (10 µg/ml, 5 min).



Vimentin Antibody (CT) immunohistochemistry analysis in formalin fixed and paraffin embedded human colon tissue followed by peroxidase conjugation of the secondary antibody and DAB staining.



Western blot analysis of Vimentin antibody (CT) in NCI-H460 cell line lysates (35 µg/lane).



Vimentin Antibody (CT) FACS analysis of HeLa cells (right histogram) compared to a negative control cell (left histogram). FITC-conjugated goat-anti-rabbit secondary antibodies were used for the analysis.

RELATED PRODUCTS:

- Vimentin Antibody (Cat # 3634-100)

