

C-Kit/CD117 Antibody (NT)

ALTERNATE NAMES: KIT, Mast/stem cell growth factor receptor, Proto-oncogene tyrosine-protein kinase Kit

CATALOG #: 6777-100

AMOUNT: 100 µl

HOST/ISOTYPE: Rabbit

IMMUNOGEN: This c-KIT antibody is generated from rabbits immunized with a KLH conjugated synthetic peptide between 9-40 amino acids from the N-terminal region of human c-KIT.

MOLECULAR WEIGHT: ~109.86 kDa

FORM: Liquid

FORMULATION: 50 mM Tris-Glycine (pH 7.4), 0.15 M NaCl, 40% Glycerol, 0.01% sodium azide and 0.05% BSA.

SPECIES REACTIVITY: Human.

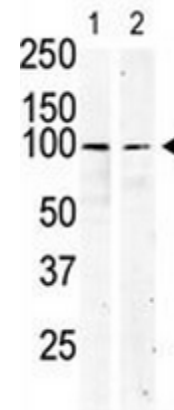
STORAGE CONDITIONS: Maintain refrigerated at 2-8°C for up to 6 months. For long term storage, store at -20°C in small aliquots to prevent freeze-thaw cycles.

DESCRIPTION: The c-Kit proto-oncogene is a member of the receptor tyrosine kinase family and, more specifically, is closely related to the platelet derived growth factor receptor (PDGFR). c-Kit, the normal cellular homolog of the HZ4-feline sarcoma virus transforming gene (v-Kit), encodes a transmembrane receptor. c-Kit regulates a variety of biological responses including chemotaxis, cell proliferation, apoptosis, and adhesion. c-Kit is also identical with the product of the W locus in mice and, as such, is integral to the development of mast cells and hematopoiesis. The ligand for the c-Kit receptor (KL) has been identified and is encoded at the murine steel (Sl) locus. Kit is the human homolog of the proto-oncogene c-Kit. Mutations in Kit are integral for tumor growth and progression in various cancers.

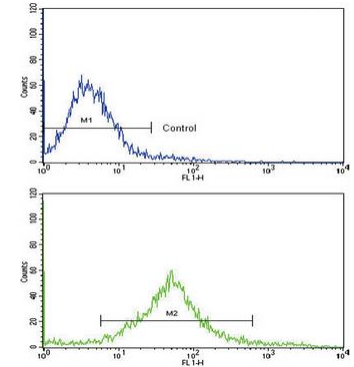
APPLICATION: WB: 1:1000, IHC: 1:10 – 1:50, IF: 1:10 – 1:50.

Note: This information is only intended as a guide. The optimal dilutions must be determined by the user.

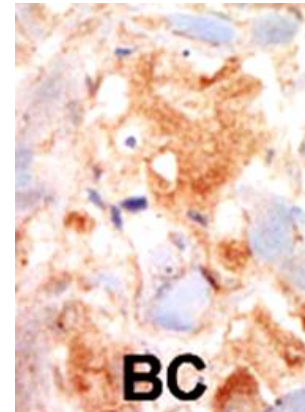
FOR RESEARCH USE ONLY! Not to be used on humans.



The anti-KIT Pab is used in Western blot to detect KIT in serum-starved HeLa cell lysate (lane 1) and primate testis tissue lysate (lane 2).



Flow cytometric analysis of HeLa cells using KIT Antibody (N-term)(bottom histogram) compared to a negative control cell (top histogram). FITC-conjugated goat-anti-rabbit secondary antibodies were used for the analysis.



Purified rabbit anti-KIT Pab was used in immunohistochemistry on Breast Carcinoma.

RELATED PRODUCTS:

- C-Kit Antibody (Clone # Y145) (Cat # 6776-50)