

# Thy1/CD90 Antibody (NT)

**ALTERNATE NAMES:** THY1; Thy-1 membrane glycoprotein; CDw90; Thy-1 antigen; CD90

**CATALOG #:** 6778-100

**AMOUNT:** 100 µl

**HOST/ISOTYPE:** Rabbit

**IMMUNOGEN:** This THY1 antibody is generated from rabbits immunized with a KLH conjugated synthetic peptide between 36-65 amino acids from the N-terminal region of human THY1.

**MOLECULAR WEIGHT:** ~17.935 kDa

**FORM:** Liquid

**FORMULATION:** In PBS with 0.09% (W/V) sodium azide.

**PURIFICATION:** This antibody is prepared by Saturated Ammonium Sulfate (SAS) precipitation followed by dialysis against PBS.

**SPECIES REACTIVITY:** Human.

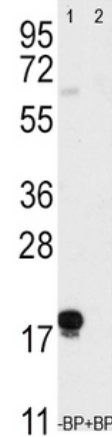
**STORAGE CONDITIONS:** Maintain refrigerated at 2-8°C for up to 6 months. For long term storage, store at -20°C in small aliquots to prevent freeze-thaw cycles.

**DESCRIPTION:** Thy1 is a GPI-anchored, developmentally regulated protein involved in various signaling cascades that mediate neurite outgrowth, T cell activation, tumor suppression, apoptosis, and fibrosis. It is highly expressed on the surface of adult neurons and is thought to play a role in modulating adhesive and migratory events, such as neurite extension. Decreased Thy1 expression is associated with the development of epithelial ovarian cancer, revealing its role as a putative tumor suppressor gene of human ovarian cancer. Thy1 knockout mice have impaired cutaneous immune responses and abnormal retinal development. Thy1 is epigenetically regulated or deregulated in some disease states, such as pulmonary fibrosis. The potentially reversible hypermethylation of the Thy1 promoter offers the possibility of novel therapeutic options in this disease.

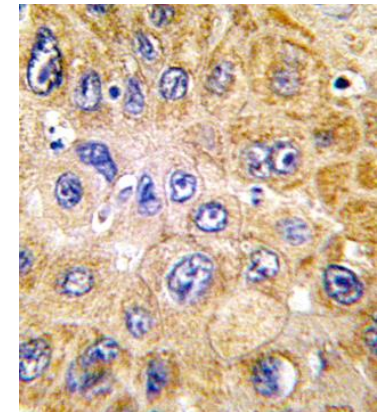
**APPLICATION:** WB: 1:1000, IHC: 1:50 – 1:100.

**Note:** This information is only intended as a guide. The optimal dilutions must be determined by the user.

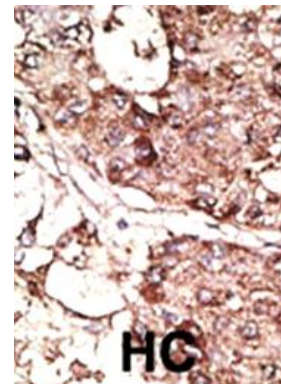
**FOR RESEARCH USE ONLY! Not to be used on humans.**



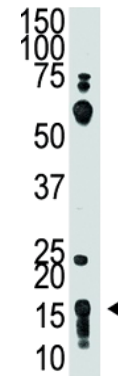
Western blot analysis of anti-THY1 (NT) Pab pre-incubated without (lane 1) and with (lane 2) blocking peptide (BP2050a) in T47D cell line lysate. THY1 (NT) (arrow) was detected using the purified Pab.



Formalin-fixed and paraffin-embedded human hepatocarcinoma tissue reacted with THY1 antibody (NT) which was peroxidase-conjugated to the secondary antibody, followed by DAB staining.



Formalin-fixed and paraffin-embedded human cancer tissue reacted with the primary antibody, which was peroxidase-conjugated to the secondary antibody, followed by DAB staining.



The anti-THY1 (NT) Pab is used in Western blot to detect THY1 in HL60 cell lysate.

**RELATED PRODUCTS:**

- Thy1/CD90 Antibody (Clone # EPR3132) (Cat # 6779-50)

