

# N-Cadherin Antibody (Clone # EPR1791-4)

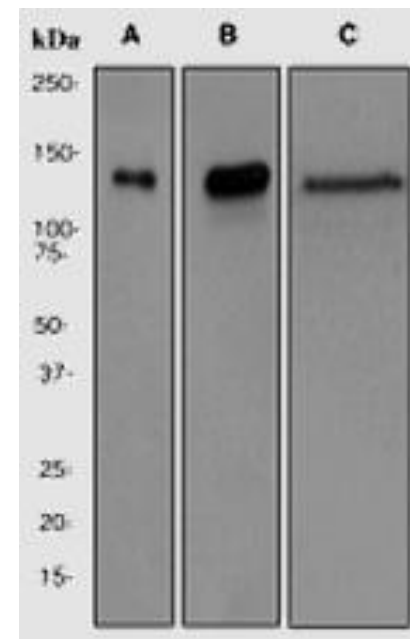
<b>ALTERNATE NAMES:</b>	CDH2, CDHN, NCAD, Cadherin-2, CDw325
<b>CATALOG #:</b>	6781-50
<b>AMOUNT:</b>	50 µl
<b>HOST/ISOTYPE:</b>	Rabbit
<b>IMMUNOGEN:</b>	A synthetic peptide corresponding to residues in the extracellular region of human N-Cadherin was used as an immunogen.
<b>MOLECULAR WEIGHT:</b>	~99.809 kDa
<b>FORM:</b>	Liquid
<b>FORMULATION:</b>	In 50 mM Tris-Glycine (pH 7.4), 0.15 M NaCl, 40% Glycerol, 0.01% sodium azide and 0.05% BSA.
<b>SPECIES REACTIVITY:</b>	Human, Rat, Mouse.
<b>STORAGE CONDITIONS:</b>	Maintain refrigerated at 2-8°C for up to 6 months. For long term storage, store at -20°C in small aliquots to prevent freeze-thaw cycles.

**DESCRIPTION:** Thy1 is a GPI-anchored, developmentally regulated protein involved in various signaling cascades that mediate neurite outgrowth, T cell activation, tumor suppression, apoptosis, and fibrosis. It is highly expressed on the surface of adult neurons and is thought to play a role in modulating adhesive and migratory events, such as neurite extension. Decreased Thy1 expression is associated with the development of epithelial ovarian cancer, revealing its role as a putative tumor suppressor gene of human ovarian cancer. Thy1 knockout mice have impaired cutaneous immune responses and abnormal retinal development. Thy1 is epigenetically regulated or deregulated in some disease states, such as pulmonary fibrosis. The potentially reversible hypermethylation of the Thy1 promoter offers the possibility of novel therapeutic options in this disease.

**APPLICATION:** WB: 1:1000 – 1:10000.

**Note:** This information is only intended as a guide. The optimal dilutions must be determined by the user.

**FOR RESEARCH USE ONLY! Not to be used on humans.**



Western blot analysis on (A) Huvec (B) C6 and (C) HeLa cell lysates using anti-N-Cadherin RabMAb, dilution 1:20,000 (A and B); 1:5000 (C).

#### RELATED PRODUCTS:

- Cadherin Antibody (Cat # 3365R-100)
- Cadherin Blocking Peptide (Cat # 3365RBP-50)
- E-Cadherin Protein, Human CellExp™, human recombinant (Cat # 7420-25)