

HLA-B Antibody (Clone # 528CT10.4.1)

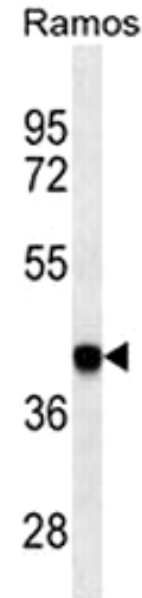
ALTERNATE NAMES:	HLA-B; HLAB; HLA class I histocompatibility antigen, B-27 alpha chain; MHC class I antigen B*27
CATALOG #:	6791-100
AMOUNT:	100 µl
HOST/ISOTYPE:	Mouse, IgM
IMMUNOGEN:	This HLA-B antibody is generated from mice immunized with a KLH conjugated synthetic peptide between 62-90 amino acids from human HLA-B.
MOLECULAR WEIGHT:	~40.428 kDa
FORM:	Liquid
FORMULATION:	In PBS with 0.09% (W/V) sodium azide.
PURIFICATION:	This antibody is prepared by Euglobin precipitation followed by dialysis against PBS.
SPECIES REACTIVITY:	Human.
STORAGE CONDITIONS:	Maintain refrigerated at 2-8°C for up to 6 months. For long term storage, store at -20°C in small aliquots to prevent freeze-thaw cycles.

DESCRIPTION: Major histocompatibility complex (MHC) molecules form an integral part of the immune response system. They are cell-surface receptors that bind peptides and present them to T lymphocytes. Human leukocyte antigens (HLAs) are polymorphic members of the MHC family that are specifically involved in the presentation of antigens to the T cell receptor. There are two classes of HLA antigens: class I (HLA-A, HLA-B and HLA-C) and class II (HLA-D). Class I molecules are expressed in nearly all cells and play a central role in the immune system by presenting peptides derived from the endoplasmic reticulum. The differential structural properties of MHC class I and class II molecules account for their respective roles in activating different populations of T lymphocytes. HLA-B and HLA-C encode membrane anchored heavy chains which heterodimerize with a light chain (β -2-Microglobulin) to form MHC-I. Polymorphisms yield hundreds of HLA-B and HLA-C alleles.

APPLICATION: WB: 1:100 – 1:250.

Note: This information is only intended as a guide. The optimal dilutions must be determined by the user.

FOR RESEARCH USE ONLY. Not to be used on humans.



HLA-B Antibody western blot analysis in Ramos cell line lysates (35 µg/lane). This demonstrates the HLA-B antibody detected the HLA-B protein (arrow).

RELATED PRODUCTS:

- HLA-A Antibody (Clone # 7G7F9) (Cat # 6790-50)
- HLA-DRA Antibody (Clone # 302CT2.3.2) (Cat # 6792-50)
- CD74, human recombinant (Cat # 7317-100)
- Human CellExp™ CD74/DHLA, human recombinant (Cat # 7387-10, -50)
- sCD4, human recombinant (Cat # 4939-10, -1000)