

# ANPEP/CD13 Antibody (Clone # 505CT12.1.2)

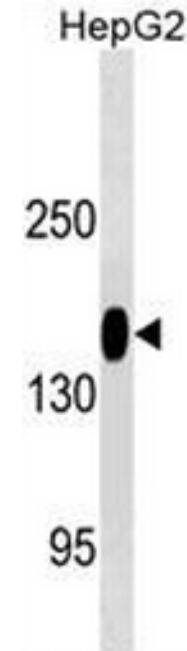
<b>ALTERNATE NAMES:</b>	ANPEP; APN; CD13; PEPN; Aminopeptidase N; Alanyl aminopeptidase, Aminopeptidase M, Microsomal aminopeptidase;
<b>CATALOG #:</b>	6794-100
<b>AMOUNT:</b>	100 µl
<b>HOST/ISOTYPE:</b>	Mouse IgG2a
<b>IMMUNOGEN:</b>	This ANPEP/CD13 antibody is generated from mice immunized with a KLH conjugated synthetic peptide between 156-184 amino acids from human ANPEP/CD13.
<b>MOLECULAR WEIGHT:</b>	~109.540 kDa
<b>FORM:</b>	Liquid
<b>FORMULATION:</b>	In PBS with 0.09% (W/V) sodium azide.
<b>PURIFICATION:</b>	This antibody is purified through a protein G column, followed by dialysis against PBS.
<b>SPECIES REACTIVITY:</b>	Human.
<b>STORAGE CONDITIONS:</b>	Maintain refrigerated at 2-8°C for up to 6 months. For long term storage, store at -20°C in small aliquots to prevent freeze-thaw cycles.

**DESCRIPTION:** CD13, or aminopeptidase N, is a type II transmembrane glycoprotein that is expressed on most cells of Myeloid origin, including monocytes, basophils, eosinophils, neutrophils and Myeloid leukemias. CD13 is also found on certain epithelial cells, fibroblasts and osteoclasts. CD13 acts as a zinc-binding metalloprotease that plays a role in digestion and may function in the inactivation of some regulatory peptides such as enkephalins. CD13 may play a role in the invasion of cancer cells by enhancing their invasive capacity and metastatic behavior. The activity of CD13 can be inactivated using specific inhibitors that evoke apoptosis of CD13-positive cancer cells. Basic fibroblast growth factor (bFGF) expression upregulates CD13 expression in human melanoma cells by activating both the Myeloid and the epithelial CD13 promoter.

**APPLICATION:** WB: 1:100 – 1:250

**Note:** This information is only intended as a guide. The optimal dilutions must be determined by the user.

*FOR RESEARCH USE ONLY! Not to be used on humans*



ANPEP/CD13 Antibody western blot analysis in HepG2 cell line lysates (35 µg/lane).

#### RELATED PRODUCTS:

- Human CellExp™ CD223, human recombinant (Cat. No. 7278-10, -50)
- Human CellExp™ CD71, human recombinant (Cat. No. 7279-10, -50)
- Human CellExp™ CD273, human recombinant (Cat. No. 7369-10, -50)
- Human CellExp™ CD33, human recombinant (Cat. No. 7370-10, -50)
- Human CellExp™ CD87, human recombinant (Cat. No. 7372-20, -100)
- Human CellExp™ CD360, human recombinant (Cat. No. 7373-20, -100)
- Human CellExp™ CD244, human recombinant (Cat. No. 7374-10, -50)
- Human CellExp™ CD304, human recombinant (Cat. No. 7375-10)