

CD146/MCAM Antibody (CT)

ALTERNATE NAMES: MCAM; MUC18; Cell surface glycoprotein MUC18; Cell surface glycoprotein P1H12; Melanoma cell adhesion molecule; Melanoma-associated antigen A32; Melanoma-associated antigen MUC18; S-endo 1 endothelial-associated antigen

CATALOG #: 6801-100

AMOUNT: 100 µl

HOST/ISOTYPE: Rabbit

IMMUNOGEN: This MCAM antibody is generated from rabbits immunized with a KLH conjugated synthetic peptide between 532-558 amino acids from the C-terminal region of human MCAM.

MOLECULAR WEIGHT: ~71.607 kDa

FORM: Liquid

FORMULATION: In PBS with 0.09% (W/V) sodium azide.

PURIFICATION: This antibody is purified through a protein A column, followed by peptide affinity purification.

SPECIES REACTIVITY: Human.

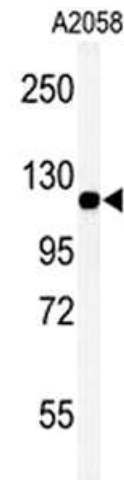
STORAGE CONDITIONS: Maintain refrigerated at 2-8°C for up to 6 months. For long term storage, store at -20°C in small aliquots to prevent freeze-thaw cycles.

DESCRIPTION: The CD146 antigen, also known as MCAM, is an integral membrane glycoprotein belonging to the immunoglobulin superfamily. CD146 contains the characteristic immunoglobulin-like domains (V-V-C2-C2-C2), a transmembrane region and a short cytoplasmic tail. The CD146 expression is detected in endothelial cells in vascular tissue throughout the body, and plays a role in cell adhesion, as well as in cohesion of the endothelial monolayer at intercellular junctions in vascular tissue. As a Ca²⁺-independent cell adhesion molecule involved in heterophilic cell to cell interactions and a surface receptor, CD146 triggers tyrosine phosphorylation of FYN and PTK2 and subsequently induced signal transduction, proteolysis, or immune recognition. CD146 is expressed predominantly on metastatic lesions and advanced primary tumours, and has been suggested to play an important role in tumour progression and the development of metastasis in certain human carcinomas.

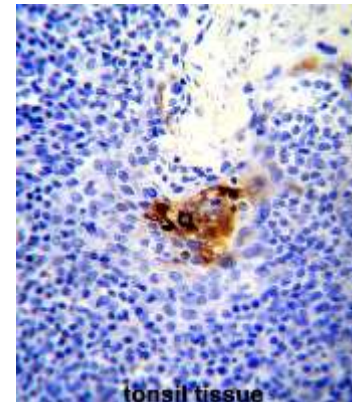
APPLICATION: WB: 1:1000, IHC: 1:10 – 1:50.

Note: This information is only intended as a guide. The optimal dilutions must be determined by the user.

FOR RESEARCH USE ONLY. Not for use on humans.



Western blot analysis of MCAM Antibody (C-term) in A2058 cell line lysates (35 µg/lane). MCAM (arrow) was detected using the purified pAb.



MCAM Antibody (C-term) IHC analysis in formalin fixed and paraffin embedded human tonsil tissue followed by peroxidase conjugation of the secondary antibody and DAB staining.

RELATED PRODUCTS:

- Antibodies and Supporting Tools