

MBD1 Antibody

ALTERNATE NAMES: CXXC3, PCM1, RFT, Methyl-CpG-Binding Domain 1

CATALOG #: 6828-25

AMOUNT: 25 µg

HOST/ISOTYPE: Rabbit

IMMUNOGEN: MBD1 (Methyl-CpG-binding domain protein 1) synthetic peptide containing a sequence from the N-terminal conjugated to KLH

FORM: Liquid

FORMULATION: In PBS containing 0.05% azide and 0.05% ProClin 300.

PURIFICATION: Affinity purified

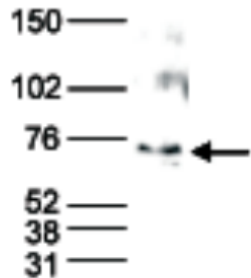
SPECIES REACTIVITY: Human.

STORAGE CONDITIONS: Store at -20°C; for long storage, store at -80°C. Avoid multiple freeze-thaw cycles.

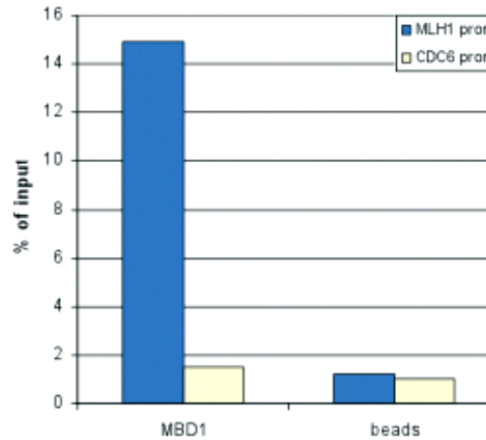
DESCRIPTION: MBD1 is a transcriptional repressor that specifically binds to methylated CpG dinucleotides in promoter sequences. MBD1 acts by recruiting a variety of histone deacetylases (HDAC's) and chromatin remodelling factors. MBD1-dependent transcriptional repression is mediated by ATF7IP through the recruitment of factors such as the histone methyltransferase SETDB1. MBD1 probably forms a complex with SETDB1 and ATF7IP which couples DNA methylation to H3K9 trimethylation and represses transcription.

APPLICATION: ChIP: 1.5 µg/ChIP, WB: 1:500, ELISA: 1:1000.

Note: This information is only intended as a guide. The optimal dilutions must be determined by the user.

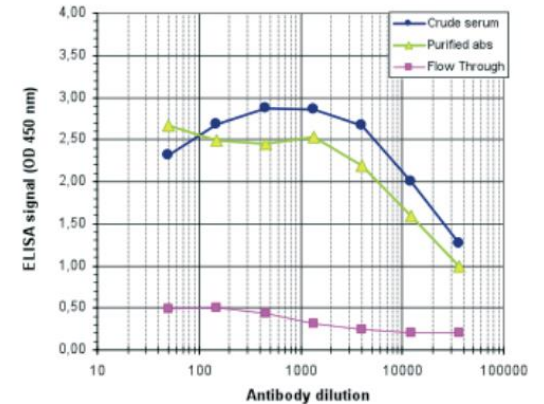


Nuclear extracts of HeLa cells (40 µg) were analysed by WB blot using the antibody. The molecular weight marker is shown on the left; the location of the protein of interest is indicated on the right.



ChIP assays were performed using U2OS cells and the antibody and optimized PCR primer sets for qPCR. Beads only were used as a negative control. The Fig shows the recovery, expressed as a % of input (the relative amount of IP DNA compared to input DNA after qPCR analysis).

To determine the titer, an ELISA was performed using a serial dilution of the antibody. The antigen used was a peptide containing the histone modification of interest. By plotting the absorbance against the antibody dilution the titer of the antibody was estimated to be 1:20,000.



RELATED PRODUCTS:

- MBD1 Antibody (Cat. No. 3281-100)
- MBD1 (Clone 100B272.1) Antibody (Cat. No. 6103-50)
- MCAF Antibody (Cat. No. 3759-100)
- MBD1 Blocking peptide (Cat. No. 3281BP-50)
- MBD2a Antibody (Cat. No. 3232-100)
- Anti-MBD2/3 Monoclonal Antibody (Clone 106B691) (Cat. No. 6104-50)
- MBD2a Blocking peptide (Cat. No. 3232BP-50)
- MBD4 Antibody (Cat. No. 3056-100)
- MBD4 Blocking peptide (Cat. No. 3056BP-50)

FOR RESEARCH USE ONLY! Not to be used on humans.

