

# Paf1 Antibody

**ALTERNATE NAMES:** PD2

**CATALOG #:** 6831-25

**AMOUNT:** 25 µg

**HOST/ISOTYPE:** Rabbit

**IMMUNOGEN:** Polyclonal antibody raised in rabbit against human Paf1 (Paf1, RNA polymerase II associated factor, homolog), using the full length recombinant protein.

**FORM:** Liquid

**FORMULATION:** In PBS containing 0.05% azide and 0.05% ProClin 300.

**PURIFICATION:** Protein G purified

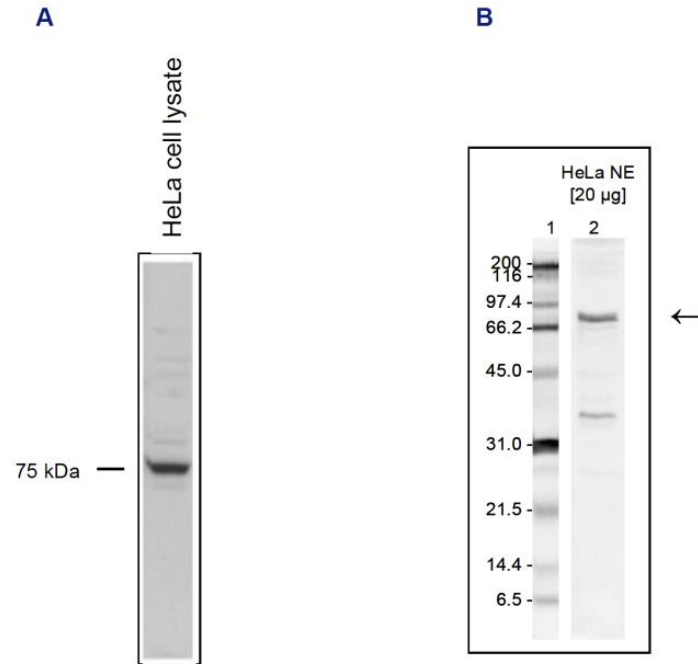
**SPECIES REACTIVITY:** Human.

**STORAGE CONDITIONS:** Store at -20°C; for long storage, store at -80°C. Avoid multiple freeze-thaw cycles.

**DESCRIPTION:** PAF is a five-subunit protein complex composed of Paf1, Cdc73, Leo1, Rtf1 and Ctr9, which was first purified from yeast. The yeast PAF (yPAF) complex interacts with RNA polymerase II and coordinates the setting of histone marks associated with active transcription. The human PAF (hPAF) complex shares four subunits with yPAF (hCtr9, hPaf1, hLeo1 and Cdc73), but contains an additional higher eukaryotic-specific subunit, hSki8. In addition to coordinating events during transcription (initiation, promoter clearance and elongation); PAF also coordinates events in RNA quality control.

**APPLICATION:** WB: 1:1000, ChIP: 1-5 µg/ChIP.

**Note:** This information is only intended as a guide. The optimal dilutions must be determined by the user.



Nuclear extracts from HeLa cells (20 µg) were analysed by western blot using the antibody diluted 1:1,000 in TBS-Tween containing 5% skimmed milk. The position of the protein of interest is indicated on the right; the marker (in kDa) is shown on the left.

**RELATED PRODUCTS:**

- Paf1 Antibody (Cat # 3800-100)

**FOR RESEARCH USE ONLY! Not to be used on humans.**

