

Suz12 Antibody

ALTERNATE NAMES: CHET9, JJAZ1

CATALOG #: 6832-25

AMOUNT: 25 µg

HOST/ISOTYPE: Rabbit

IMMUNOGEN: Polyclonal antibody raised in rabbit against the N-terminus of recombinant human Suz12 protein (Suppressor of Zeste 12 protein homolog).

FORM: Liquid

FORMULATION: In PBS containing 0.05% azide and 0.05% ProClin 300.

PURIFICATION: Protein G purified

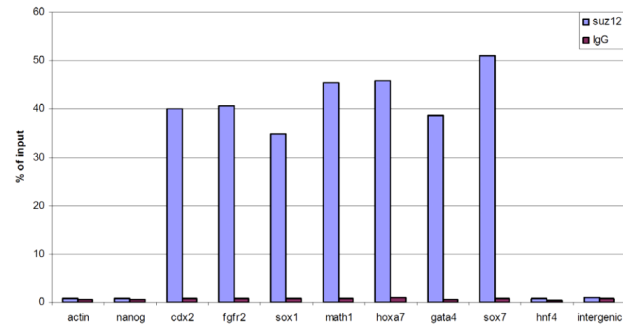
SPECIES REACTIVITY: Human and mouse.

STORAGE CONDITIONS: Store at -20°C; for long storage, store at -80°C. Avoid multiple freeze-thaw cycles.

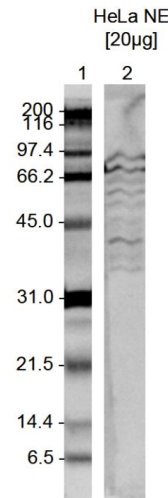
DESCRIPTION: Suz12 is a Polycomb group (PcG) protein. These proteins form multiprotein complexes, which keep homeotic genes in a transcriptionally repressive state throughout development. PcG proteins are not required to initiate repression, but maintain it during later stages of development. They probably act via the methylation of histones. Suz12 is a component of the PRC2 complex, which is composed of EED, EZH2, SUZ12/JJAZ1, RBBP4 and RBBP7, and methylates 'Lys-9' and 'Lys-27' of histone H3.

APPLICATION: ChIP: 10 µg/ChIP, Western Blot: 1:1000.

Note: This information is only intended as a guide. The optimal dilutions must be determined by the user.



ChIP was performed using 600 µg of chromatin from mouse ES cells and 10 µg of the antibody. IgG (10 µg) was used as a negative IP control. The IP'd DNA was analysed by QPCR with specific primer sets for different positive and negative genes. The results are expressed as a % of input (the relative abundance of target DNA in the immunoprecipitates compared to the input DNA).



HeLa nuclear extracts (HeLa NE, 20 µg) were analysed by Western blot using the antibody diluted 1:1,000 in TBS-Tween containing 5% skimmed milk (lane 2, expected size: 83 kDa). A molecular weight marker is shown in lane 1.

RELATED PRODUCTS:

- EZH2 Antibody (Cat # 3242-100)
- EZH2 Inhibitor, EPZ005687 (Cat # 2364-2, -10)
- EED Antibody (NT) (Cat # 5292-100)
- EED (1- 441aa), Human recombinant (Cat # 7667-25)

FOR RESEARCH USE ONLY! Not to be used on humans.

