

Ash2 Antibody

ALTERNATE NAMES: ASH2L, ASH2L1, ASH2L2, Bre2

CATALOG #: 6836-50

AMOUNT: 50 µl

HOST/ISOTYPE: Rabbit

IMMUNOGEN: Polyclonal antibody raised in rabbit against mouse Ash2 (absent, small, or homeotic 2), using 3 different KLH-conjugated synthetic peptides, 2 containing an amino acid sequence from the central and 1 containing an amino acid sequence from the C-terminal part of the protein.

FORM: Liquid

FORMULATION: In PBS with 0.05% (W/V) sodium azide.

PURIFICATION: Whole antiserum from rabbit

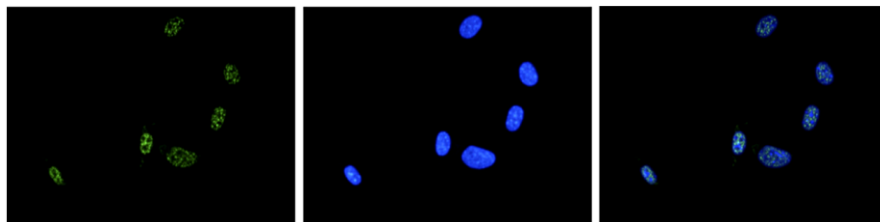
SPECIES REACTIVITY: Mouse.

STORAGE CONDITIONS: Store at -20°C; for long storage, store at -80°C. Avoid multiple freeze-thaw cycles.

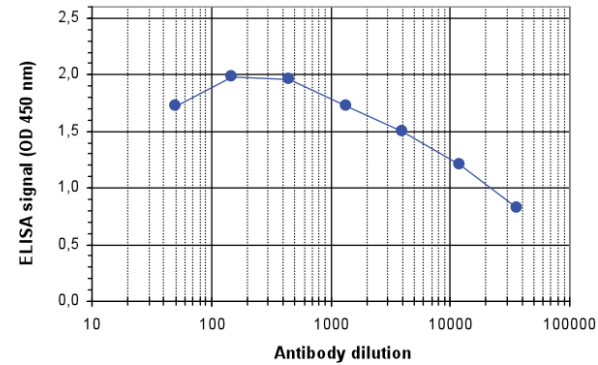
DESCRIPTION: Ash2 is a component of the Set1/Ash2 histone methyltransferase (HMT) complex. This complex specifically methylates K4 of histone H3, thereby activating transcription. Methylation of K4 is blocked by premethylation of the neighboring K9, a repressor of transcription. This indicates that the Set1/Ash2 HMT complex mediates the crosstalk between K9 methylation and K4 methylation. Ash2 plays a role in hematopoiesis and may be associated with some kinds of leukemia.

APPLICATION: ELISA: 1:100 – 1:500, Western Blotting: 1:500 – 1:1000, IF: 1:200.

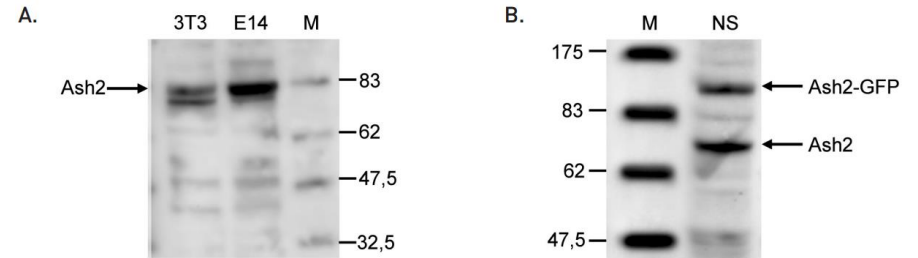
Note: This information is only intended as a guide. The optimal dilutions must be determined by the user.



NIH3T3 cells were stained with the antibody and DAPI. The cells were labelled with the Ash2 antibody (left) diluted 1:200 in blocking solution followed by an anti-rabbit antibody conjugated to Alexa488. The middle panel shows staining of the nuclei with DAPI. A merge of the two stainings is shown on the right.



To determine the titer, an ELISA was performed using a serial dilution of the antibody. The wells were coated with the peptides used for immunization of the rabbit. By plotting the absorbance against the antibody dilution, the titer of the antibody was estimated to be 1:24,000.



A. Western blot was performed on whole cell lysates from mouse fibroblast (NIH3T3) and embryonic stem cells (E14Tg2a) with the antibody diluted 1:1,000 in BSA/PBS-Tween. The molecular weight marker (in kDa) is shown on the right; the location of the protein of interest (predicted size: 68 kDa) is indicated on the left.

B. Western blot was performed on whole cell lysates from mouse neural stem cells (NS), transfected with GFP tagged Ash2, with the antibody diluted 1:500 in BSA/PBS-Tween. The molecular weight marker (in kDa) is shown on the left; the location of the endogenous Ash2 (68 kDa) and of the GFP tagged Ash2 (106 kDa) are indicated on the right.

RELATED PRODUCTS:

- ASH2 Antibody (**Cat # 3772-100**)
- Ash2L (96-628 aa), Human recombinant (**Cat # 7664-25**)

FOR RESEARCH USE ONLY! Not to be used on humans.

