

EHMT1 Antibody

ALTERNATE NAMES: GLP1, KMT1D

CATALOG #: 6837-50

AMOUNT: 50 µl

HOST/ISOTYPE: Rabbit

IMMUNOGEN: Polyclonal antibody raised in rabbit against mouse Ehmt1 (euchromatic histone-lysine N-methyltransferase 1), using three KLH-conjugated synthetic peptides containing a sequence from the central part of the protein.

FORM: Liquid

FORMULATION: In PBS with 0.05% (W/V) sodium azide.

PURIFICATION: Whole antiserum from rabbit

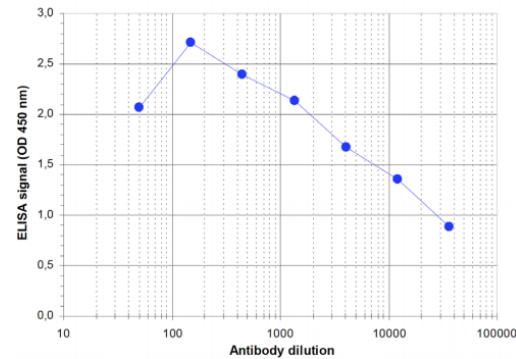
SPECIES REACTIVITY: Human and Mouse.

STORAGE CONDITIONS: Store at -20°C; for long storage, store at -80°C. Avoid multiple freeze-thaw cycles.

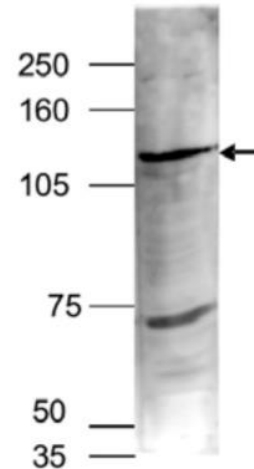
DESCRIPTION: EHMT1 is a histone methyltransferase which specifically methylates histone H3 on lysine 9. H3K9 methylation represents a marker for epigenetic transcriptional repression. This repression is established by recruiting HP1 proteins to the methylated histone. H3K9 methylation may contribute to silencing of MYC and E2F responsive genes and plays a role in murine embryogenesis.

APPLICATION: ELISA: 1:100 – 1:200, Western Blotting: 1:500.

Note: This information is only intended as a guide. The optimal dilutions must be determined by the user.



To determine the titer, an ELISA was performed using a serial dilution of the antibody. The wells were coated with the peptides used for immunization of the rabbit. By plotting the absorbance against the antibody dilution, the titer of the antibody was estimated to be 1:10,600.



Nuclear extracts of HeLa cells (40 µg) were analysed by Western blot using the antibody diluted 1:1,000 in TBS-Tween containing 5% skimmed milk. The position of the protein of interest (expected size: 138 kDa) is indicated on the right; the marker (in kDa) is shown on the left.

RELATED PRODUCTS:

- EHMT2 Antibody (Cat # 6152-100)

FOR RESEARCH USE ONLY! Not to be used on humans.

