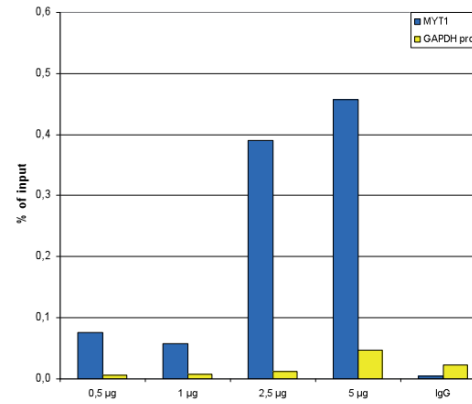


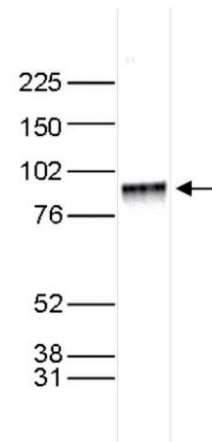
EZH2 Antibody

ALTERNATE NAMES:	Enhancer of zeste homolog 2
CATALOG #:	6838-25
AMOUNT:	25 µg
HOST/ISOTYPE:	Rabbit
IMMUNOGEN:	Polyclonal antibody raised in rabbit against the N-terminus (aa1-343) of the mouse EZH2 protein (Enhancer of zeste homolog 2).
FORM:	Liquid
FORMULATION:	In PBS containing 0.05% azide and 0.05% ProClin 300.
PURIFICATION:	Protein G purified
SPECIES REACTIVITY:	Human and mouse.
STORAGE CONDITIONS:	Store at -20°C; for long storage, store at -80°C. Avoid multiple freeze-thaw cycles.
DESCRIPTION:	EZH2 is a histone-lysine methyltransferase which methylates 'Lys-9' and 'Lys-27' of histone H3, leading to transcriptional repression. It is a member of the polycomb group (PcG) family which form multimeric protein complexes and are involved in maintaining the transcriptional repressive state of genes over successive cell generations. The EZH2 activity is dependent on the association with other components of the PRC2 complex (EED, EZH2, SUZ12/JJAZ1, RBBP4 and RBBP7). EZH2 may play a role in the hematopoietic and central nervous systems. Over-expression of EZH2 is observed during advanced stages of prostate cancer and breast cancer.
APPLICATION:	ChIP: 2.5 µg/ChIP, Western Blot: 1:1000, IHC: 1:100 – 1:500.

Note: This information is only intended as a guide. The optimal dilutions must be determined by the user.



ChIP assays were performed using HeLa cells, the antibody and optimized PCR primer sets for qPCR. A titration of the antibody consisting of 0.5, 1, 2.5 and 5 µg per ChIP experiment was analysed. IgG (2 µg/IP) was used as negative IP control. Quantitative PCR was performed with primers for MYT1, used as a positive control target, and for the promoter of the active GAPDH gene, used as a negative control. Figure 1 shows the recovery, expressed as a % of input (the relative amount of immunoprecipitated DNA compared to input DNA after qPCR analysis).



Nuclear extracts of HeLa cells (40 µg) were analysed by Western blot using the antibody diluted 1:1,000 in TBS-Tween containing 5% skimmed milk. The position of the protein of interest (expected size 85 kDa) is indicated on the right; the marker (in kDa) is shown on the left.

RELATED PRODUCTS:

- EZH1 Antibody (Cat # 6123-100)
- EZH2 Antibody (Cat # 3242-100)
- EZH2 Inhibitor, EPZ005687 (Cat # 2364-2, -10)

FOR RESEARCH USE ONLY! Not to be used on humans.

