

CBX2 Antibody

ALTERNATE NAMES: CDCA6, M33, SRXY5

CATALOG #: 6840-50

AMOUNT: 50 µl

HOST/ISOTYPE: Rabbit

IMMUNOGEN: Polyclonal antibody raised in rabbit against mouse CBX2 (chromobox homolog 2) using two KLH-conjugated synthetic peptides containing a sequence from the central region of the protein.

FORM: Liquid

FORMULATION: In PBS with 0.05% (W/V) sodium azide.

PURIFICATION: Whole antiserum from rabbit

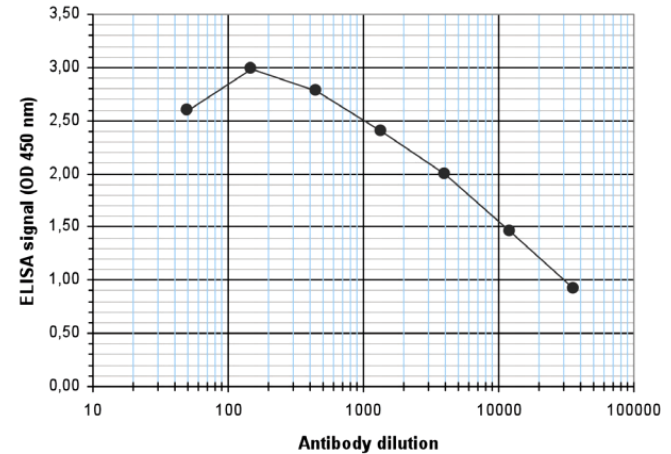
SPECIES REACTIVITY: Mouse.

STORAGE CONDITIONS: Store at -20°C; for long storage, store at -80°C. Avoid multiple freeze-thaw cycles.

DESCRIPTION: CBX2 is a component of a Polycomb group (PcG) multiprotein PRC1-like complex, a complex class required to maintain the transcriptionally repressive state of many genes, including Hox genes, throughout development. The PcG PRC1 complex acts via chromatin remodelling and modification of histones; it mediates monoubiquitination of lysine 119 on histone H2A, rendering chromatin heritably changed in its expressibility. CBX2 also is involved in sexual development, acting as an activator of NR5A1 expression.

APPLICATION: ELISA: 1:300.

Note: This information is only intended as a guide. The optimal dilutions must be determined by the user.



To determine the titer, an ELISA was performed using a serial dilution of the antibody. The wells were coated with the peptide used for immunization of the rabbit. By plotting the absorbance against the antibody dilution the titer of the antibody was estimated to be 1:10,900.

RELATED PRODUCTS:

- CBX1 Antibody (Cat # 6146-100)
- CBX3 Antibody (Cat # 6147-100)
- CBX4 Antibody (NT) (Cat # 5284-100)
- CBX5 Antibody (Cat # 6148-100)

FOR RESEARCH USE ONLY! Not to be used on humans.

