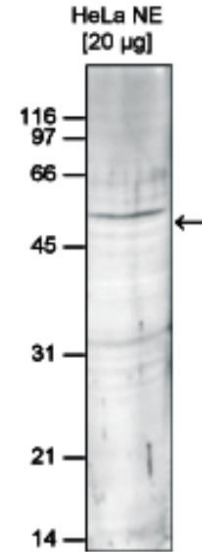


Set9 Antibody

ALTERNATE NAMES:	SET7, SET7/9, KMT7, H3-K4-HMTase
CATALOG #:	6841-25
AMOUNT:	25 µg
HOST/ISOTYPE:	Rabbit
IMMUNOGEN:	Polyclonal antibody raised in rabbit against human Set9 (SET domain containing (lysine methyltransferase) 9), using a recombinant protein.
FORM:	Liquid
FORMULATION:	In PBS with 0.05% (W/V) sodium azide and 0.05% ProClin 300.
PURIFICATION:	Protein G purified
SPECIES REACTIVITY:	Human.
STORAGE CONDITIONS:	Store at -20°C; for long storage, store at -80°C. Avoid multiple freeze-thaw cycles.
DESCRIPTION:	Set9 is a histone methyltransferase which specifically methylates lysine 4 of histone H3 being a specific tag for epigenetic transcriptional activation. Further, methylation of histone H3K4 by Set9 precludes deacetylation of H3 by the NuRD complex and impairs Suv39h1-mediated methylation of H3K9. Set9 also methylates the tumor suppressor p53 at lysine 372, thereby enhancing its stability. It contains a SET domain but lacks the pre- and post-SET domains).
APPLICATION:	Western Blot: 1:1000.

Note: This information is only intended as a guide. The optimal dilutions must be determined by the user.



HeLa nuclear extracts (HeLa NE, 20 µg) were analysed by Western blot using the antibody diluted 1:1,000 in TBS-Tween containing 5% skimmed milk. A molecular weight marker (in kDa) is shown on the left; the location of the protein of interest is indicated on the right.

RELATED PRODUCTS:

- SETD3 Antibody (Cat # 3197-200)
- SETDB1 Antibody (Cat # 6155-100)
- SetD1a Antibody (Cat # 6842-50)
- SetD1b Antibody (Cat # 6843-50)
- SetD8 Antibody (Cat # 6844-25)

FOR RESEARCH USE ONLY! Not to be used on humans.

