

# Setd1a Antibody

**ALTERNATE NAMES:** SET1, SET1A, KMT2F

**CATALOG #:** 6842-50

**AMOUNT:** 50 µl

**HOST/ISOTYPE:** Rabbit

**IMMUNOGEN:** Polyclonal antibody raised in rabbit against mouse Setd1a (Set domain containing 1A), using three KLH-conjugated synthetic peptides: two containing an amino acid sequence from the N-terminal part of the protein and one containing an amino acid sequence from the central part of the protein

**FORM:** Liquid

**FORMULATION:** In PBS with 0.05% (W/V) sodium azide.

**PURIFICATION:** Whole antiserum from rabbit

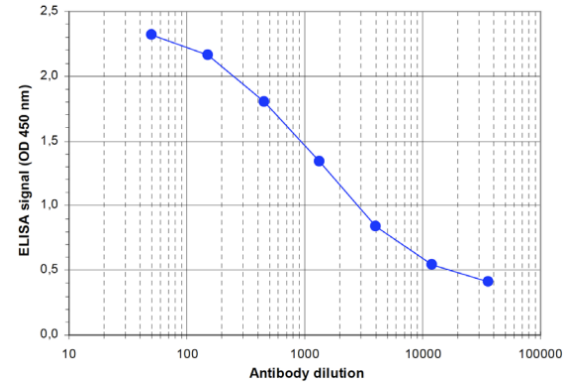
**SPECIES REACTIVITY:** Mouse.

**STORAGE CONDITIONS:** Store at -20°C; for long storage, store at -80°C. Avoid multiple freeze-thaw cycles.

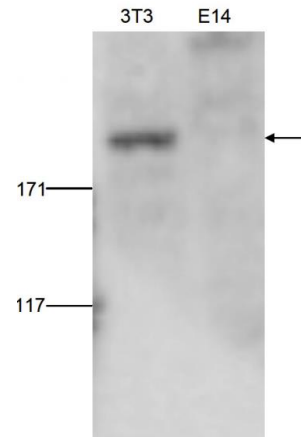
**DESCRIPTION:** SETD1A is a component of the SET1 histone methyltransferase (HMT) complex. This complex specifically methylates lysine 4 of histone H3, but only if the neighboring lysine 9 residue is not yet methylated. Methylation of H3K4 represents a specific tag for epigenetic transcriptional activation. SETD1A shows a non-overlapping localization with SETD1B, suggesting that both proteins play a specific role in the epigenetic control of chromatin structure and gene expression.

**APPLICATION:** ELISA: 1:100, Western Blot: 1:500.

**Note:** This information is only intended as a guide. The optimal dilutions must be determined by the user.



To determine the titer, an ELISA was performed using a serial dilution of the antibody. The wells were coated with the peptide used for immunization of the rabbit. By plotting the absorbance against the antibody dilution the titer of the antibody was estimated to be 1:2500.



Western blot was performed on whole cell lysates from mouse fibroblasts (NIH3T3) and embryonic stem cells (E14Tg2a) with the antibody diluted 1:500 in BSA/PBS-Tween. The molecular weight marker (in kDa) is shown on the left; the location of the protein of interest (expected size: 186 kDa) is indicated on the right.

**RELATED PRODUCTS:**

- SETD3 Antibody (Cat # 3197-200)
- SETDB1 Antibody (Cat # 6155-100)
- Set9 Antibody (Cat # 6841-25)
- SetD1b Antibody (Cat # 6843-50)
- SetD8 Antibody (Cat # 6844-25)

**FOR RESEARCH USE ONLY! Not to be used on humans.**

