

# SETD8 Antibody

**ALTERNATE NAMES:** SET07, SET8, PR/SET07, KMT5A, PR-Set7

**CATALOG #:** 6844-25

**AMOUNT:** 25 µg

**HOST/ISOTYPE:** Rabbit

**IMMUNOGEN:** Polyclonal antibody raised in rabbit against human SETD8 (SET domain containing 8), using the full length protein containing a Flag-tagged N-terminus and a His-tagged C terminus

**FORM:** Liquid

**FORMULATION:** In PBS with 0.05% (W/V) sodium azide and 0.05% ProClin 300.

**PURIFICATION:** Protein G purified

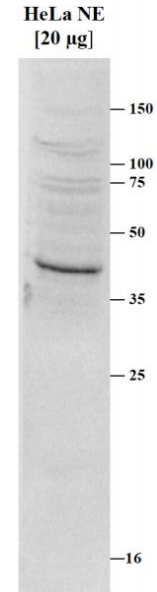
**SPECIES REACTIVITY:** Human and mouse.

**STORAGE CONDITIONS:** Store at -20°C; for long storage, store at -80°C. Avoid multiple freeze-thaw cycles.

**DESCRIPTION:** SETD8 is a histone methyl transferase that specifically monomethylates 'Lys-20' of histone H4. This histone modification represents a specific tag for epigenetic transcriptional repression is enriched during mitosis. SETD8 may also play a role in maintaining silent chromatin by preventing the acetylation of the H4 tail.

**APPLICATION:** Western Blot: 1:1000.

**Note:** This information is only intended as a guide. The optimal dilutions must be determined by the user.



Western blot was performed on nuclear extracts from HeLa cells (HeLa NE, 20 µg) using the antibody diluted 1:1000 in TBS-Tween containing 5% skimmed milk. The molecular weight marker (in kDa) is shown on the right; the location of the protein of interest is indicated by an arrow.

**RELATED PRODUCTS:**

- SETD3 Antibody (Cat # 3197-200)
- SETDB1 Antibody (Cat # 6155-100)
- Set9 Antibody (Cat # 6841-25)
- SetD1a Antibody (Cat # 6842-50)
- SetD1b Antibody (Cat # 6843-50)

**FOR RESEARCH USE ONLY! Not to be used on humans.**

