

TAF1 Antibody

ALTERNATE NAMES: TAF (II) 250, TBP-associated factor 250 kDa, p250, BA2R, CCG1, CCGS, TAF2A

CATALOG #: 6845-50

AMOUNT: 50 µl

HOST/ISOTYPE: Rabbit

IMMUNOGEN: Polyclonal antibody raised in rabbit against human TAF1 (TATA box binding protein (TBP)-associated factor; Transcription initiation factor TFIID subunit 1), using the recombinant double bromodomain module of the protein.

FORM: Liquid

FORMULATION: In PBS with 0.05% (W/V) sodium azide.

PURIFICATION: Whole antiserum from rabbit

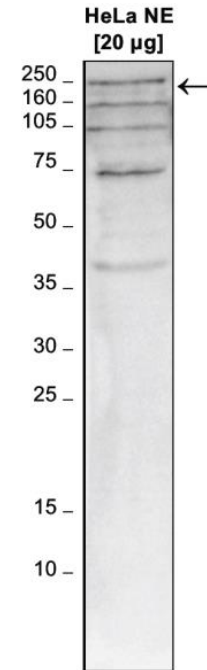
SPECIES REACTIVITY: Human.

STORAGE CONDITIONS: Store at -20°C; for long storage, store at -80°C. Avoid multiple freeze-thaw cycles.

DESCRIPTION: TAF1 is the largest component and core scaffold of the TFIID basal transcription factor complex which also includes TBP. The protein is able to auto phosphorylate or trans phosphorylate other transcription factors such as TP53 on 'Thr-55', leading to MDM2-mediated degradation of TP53, and GTF2A1 and GTF2F1 on Ser residues. TAF1 possesses DNA-binding activity and is essential for progression of the G1 phase of the cell cycle.

APPLICATION: Western Blot: 1:1000.

Note: This information is only intended as a guide. The optimal dilutions must be determined by the user.



Western blot was performed on nuclear extracts from HeLa cells (20 µg) with the antibody diluted 1:1,000 in TBS-Tween containing 5% skimmed milk (Figure 2). The molecular weight marker (in kDa) is shown on the left; the location of the protein of interest is indicated on the right.

RELATED PRODUCTS:

- TAF1 bromodomain 1 (1371-1496 aa) (GST-tagged), Human recombinant (**Cat # 7660-20, -100**)

FOR RESEARCH USE ONLY! Not to be used on humans.

