

Wdr5 Antibody

ALTERNATE NAMES: BIG3, SWD3

CATALOG #: 6846-50

AMOUNT: 50 µl

HOST/ISOTYPE: Rabbit

IMMUNOGEN: Polyclonal antibody raised in rabbit against mouse Wdr5 (WD (tryptophan-aspartate) repeat domain protein 5), using two KLH-conjugated synthetic peptides containing an amino acid sequence from the central part of the protein

FORM: Liquid

FORMULATION: In PBS with 0.05% (W/V) sodium azide.

PURIFICATION: Whole antiserum from rabbit

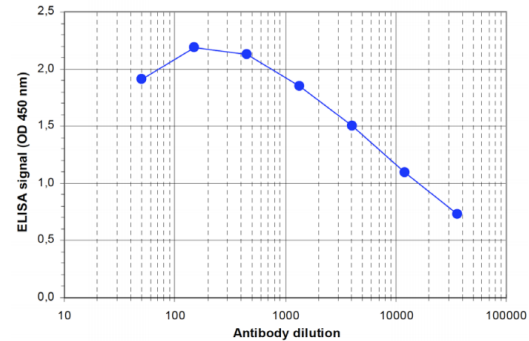
SPECIES REACTIVITY: Mouse

STORAGE CONDITIONS: Store at -20°C; for long storage, store at -80°C. Avoid multiple freeze-thaw cycles.

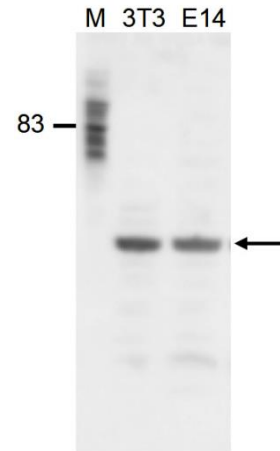
DESCRIPTION: Wdr5 belongs to the family of WD repeat proteins which are involved in different cellular processes such as cell cycle progression, signal transduction, apoptosis, and gene regulation. It is a component of the Set1A and Set1B histone H3 methylation complexes. These complexes methylate lysine 4 of H3, thereby activating gene transcription. Wdr5 interacts with H3 dimethyl K4, but not with tri or mono methylated H3K4.

APPLICATION: Western Blot: 1:1000, ELISA: 1:100 – 1:500.

Note: This information is only intended as a guide. The optimal dilutions must be determined by the user.



To determine the titer, an ELISA was performed using a serial dilution of the antibody. By plotting the absorbance against the antibody dilution (Figure 1), the titer of the antibody was estimated to be 1:12,300.



Western blot was performed on whole cell lysates of NIH3T3 cells and embryonic stem cells with the antibody diluted 1:1,000 in TBS-Tween containing 5% skimmed milk (Figure 2). The molecular weight marker (in kDa) is shown on the left; the location of the protein of interest is indicated on the right.

RELATED PRODUCTS:

- WDR5 Antibody (NT) (Cat # 5404-100)

FOR RESEARCH USE ONLY! Not to be used on humans.

