

# KDM1B Antibody

**ALTERNATE NAMES:** AOF1, LSD2, C6orf193

**CATALOG #:** 6847-50

**AMOUNT:** 50 µl

**HOST/ISOTYPE:** Rabbit

**IMMUNOGEN:** Polyclonal antibody raised in rabbit against human KDM1B (lysine (K)-specific demethylase 1B) using two KLH conjugated synthetic peptides containing a sequence from the N-terminal and the central region of the protein, respectively.

**FORM:** Liquid

**FORMULATION:** In PBS with 0.05% (W/V) sodium azide.

**PURIFICATION:** Whole antiserum from rabbit

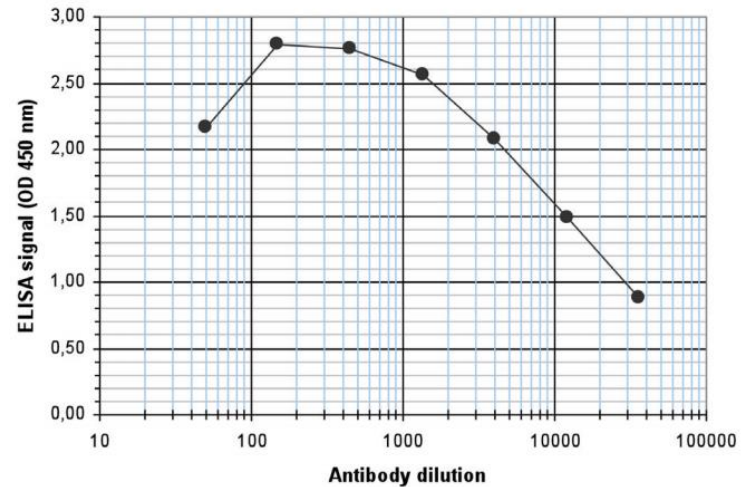
**SPECIES REACTIVITY:** Human

**STORAGE CONDITIONS:** Store at -20°C; for long storage, store at -80°C. Avoid multiple freeze-thaw cycles.

**DESCRIPTION:** KDM1B is a histone demethylase that demethylates lysine 4 of histone H3, a specific tag for epigenetic transcriptional activation, thereby acting as a corepressor. KDM1B is able to demethylate both mono- and di-methylated lysine 4 of histone H3, but has no effect on tri-methylated lysine 4, mono-, di- or tri-methylated lysine 9, mono-, di- or tri-methylated lysine 27, mono-, di- or tri-methylated lysine 36 of histone H3, or on mono-, di- or tri-methylated lysine 20 of histone H4. KDM1B is also required for de novo DNA methylation of a subset of imprinted genes during oogenesis. It acts by oxidizing the substrate by FAD to generate the corresponding imine that is subsequently hydrolyzed.

**APPLICATION:** ELISA: 1:500.

**Note:** This information is only intended as a guide. The optimal dilutions must be determined by the user.



To determine the titer, an ELISA was performed using a serial dilution of the antibody. By plotting the absorbance against the antibody dilution (Figure 1), the titer of the antibody was estimated to be 1:12,300.

**RELATED PRODUCTS:**

- Caffeic acid (Cat # 2303-50, -250)
- Daminozide (Cat # 2438-100, -500)
- HDM Inhibitor, 2,4-PDCA (Cat # 2304-100, -500)

**FOR RESEARCH USE ONLY! Not to be used on humans.**

