

JMJD2a Antibody

ALTERNATE NAMES: JHDM3A, KDM4A, JMJD2

CATALOG #: 6851-25

AMOUNT: 25 µg

HOST/ISOTYPE: Rabbit

IMMUNOGEN: Polyclonal antibody raised in rabbit against human JMJD2a (Jumonji domain containing 2a), using a KLH-conjugated synthetic peptide containing a sequence from the central part of the protein.

FORM: Liquid

FORMULATION: In PBS with 0.05% (W/V) sodium azide and 0.05% ProClin 300.

PURIFICATION: Affinity purified

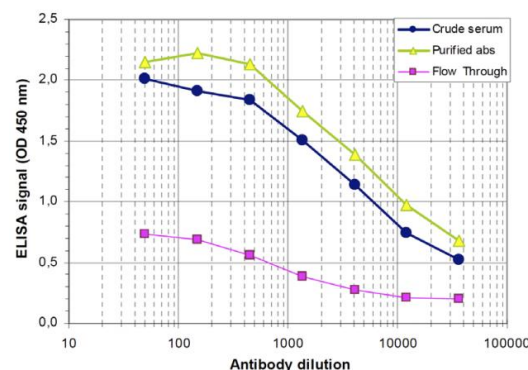
SPECIES REACTIVITY: Human.

STORAGE CONDITIONS: Store at -20°C; for long storage, store at -80°C. Avoid multiple freeze-thaw cycles.

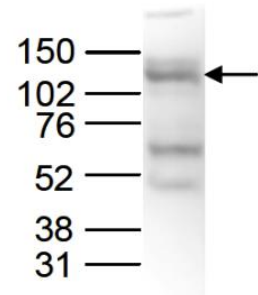
DESCRIPTION: JMJD2a belongs to the JMJD2 family of histone demethylases which play an important role in the establishment of the histone code. JMJD2a specifically demethylates the trimethylated K9 and K36 of histone H3, thereby converting these lysines to the dimethylated form. It has no activity towards H3K4, H3K27 and H4K20, or to the mono- and dimethylated H3K9 and H3K36. JMJD2a plays a role in the transcriptional repression of ASCL2 and E2F-responsive promoters via the recruitment of histone deacetylases and NCOR1, respectively.

APPLICATION: Western Blot: 1:500, ELISA: 1:100 – 1:500.

Note: This information is only intended as a guide. The optimal dilutions must be determined by the user.



To determine the titer of the antibody, an ELISA was performed using a serial dilution of the antibody directed crude serum and Flow through in antigen coated wells. By plotting the absorbance against the antibody dilution, the titer of the antibody was estimated to be 1:9000.



Nuclear extracts from HeLa cells (40 µg) were analysed by Western blot using the antibody diluted 1:500 in TBS-Tween containing 5% skimmed milk. The position of the protein of interest is indicated on the right (expected size 121 kDa); the marker (in kDa) is shown on the left.

RELATED PRODUCTS:

- JMJD1A Antibody (Cat. No. 3273-100)
- JMJD1C Antibody (Cat. No. 3439-100)
- JMJD2A Polyclonal Antibody (Cat. No. 6108-50)
- JMJD2B Antibody (Cat. No. 6852-50)
- JMJD2C Antibody (Cat. No. 6853-50)
- JMJD6 Antibody (Cat. No. 6109-100)
- JMJD2A (888-1023 aa), Human recombinant (Cat. No. 7678-20, -50)
- JMJD6 (2-403 aa), Human recombinant (Cat. No. 7679-20, -50)

FOR RESEARCH USE ONLY! Not to be used on humans.

