

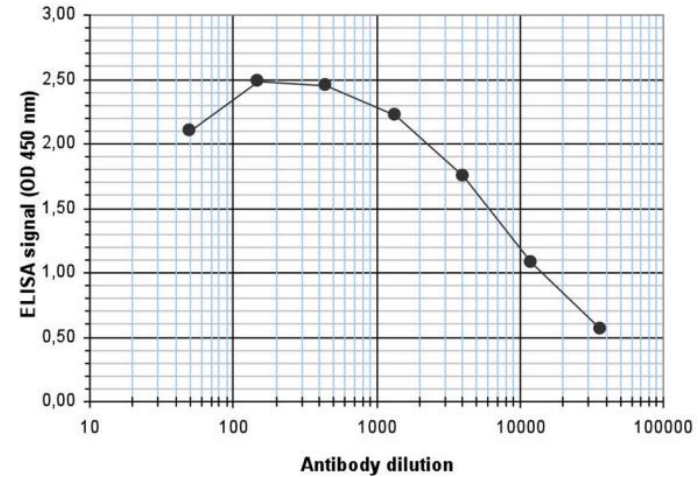
JARID2 Antibody

ALTERNATE NAMES:	JMJ
CATALOG #:	6856-50
AMOUNT:	50 µl
HOST/ISOTYPE:	Rabbit
IMMUNOGEN:	Polyclonal antibody raised in rabbit against human JARID2 (jumonji, AT rich interactive domain 2) using two KLH conjugated synthetic peptides containing a sequence from the N-terminal and the central region of the protein, respectively.
FORM:	Liquid
FORMULATION:	In PBS with 0.05% (W/V) sodium azide.
PURIFICATION:	Whole antiserum from rabbit
SPECIES REACTIVITY:	Human
STORAGE CONDITIONS:	Store at -20°C; for long storage, store at -80°C. Avoid multiple freeze-thaw cycles.

DESCRIPTION: JARID2 is a regulator of histone methyltransferase complexes that plays an essential role in embryonic development, including heart and liver development, neural tube fusion process and hematopoiesis. JARID2 acts by recruiting histone methyltransferase complexes (PRC2) to their target genes and modulating the histone methyltransferase activity. It does not have histone demethylase activity but regulates activity of various histone methyltransferase complexes. In embryonic stem cells, it associates with the PRC2 complex and inhibits trimethylation of H3K27me3 by the PRC2 complex, thereby playing a key role in differentiation of embryonic stem cells and normal development. In cardiac cells, it is required to repress expression of cyclin-D1 (CCND1) by activating H3K9 methylation by the GLP1/EHMT1 and G9a/EHMT2 histone methyltransferases.

APPLICATION: ELISA: 1:500.

Note: This information is only intended as a guide. The optimal dilutions must be determined by the user.



To determine the titer, an ELISA was performed using a serial dilution of the antibody. The wells were coated with the peptide used for immunization of the rabbit. By plotting the absorbance against the antibody dilution, the titer of the antibody was estimated to be 1:9300.

RELATED PRODUCTS:

- JARID1b Antibody (Cat. No. 6854-50)
- JARID1c Antibody (Cat. No. 6855-50)

FOR RESEARCH USE ONLY! Not to be used on humans.

