

L3MBTL1 Antibody

ALTERNATE NAMES: L3MBTL, L3MBT

CATALOG #: 6857-25

AMOUNT: 25 µg

HOST/ISOTYPE: Rabbit

IMMUNOGEN: Polyclonal antibody raised in rabbit against human L3MBTL1 (lethal 3 malignant brain tumor-like protein), using the N-terminal part of the protein.

FORM: Liquid

FORMULATION: In PBS with 0.05% (W/V) sodium azide and 0.05% ProClin 300.

PURIFICATION: Protein G purified

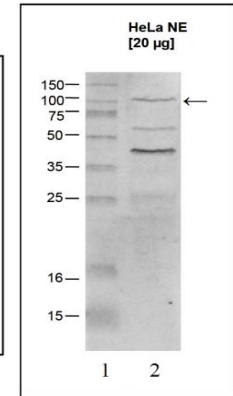
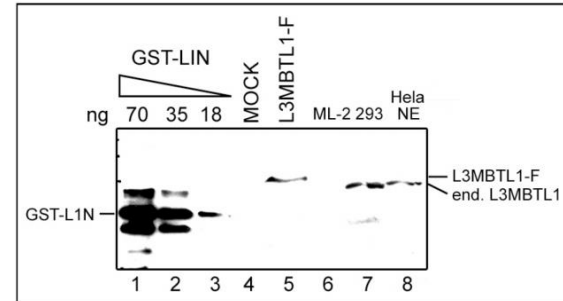
SPECIES REACTIVITY: Human.

STORAGE CONDITIONS: Store at -20°C; for long storage, store at -80°C. Avoid multiple freeze-thaw cycles.

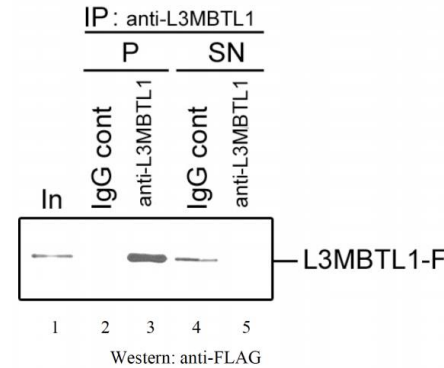
DESCRIPTION: L3MBTL1 is a member of the polycomb group (PcG) proteins, which function as transcriptional regulators in large protein complexes. In *Drosophila*, homozygous mutations in the L3MBTL1 gene have been demonstrated to cause brain tumors, identifying L3MBTL1 as a tumor suppressor gene. L3MBTL1 forms a homodimer and interacts with TEL (ETV6). L3MBTL1 probably plays a role in cell proliferation. Overexpression of L3MBTL1 induces multinucleated cells, suggesting that it is required for normal mitosis.

APPLICATION: Western Blot: 1:1000, IP: 1 - 5 µg/IP

Note: This information is only intended as a guide. The optimal dilutions must be determined by the user.



Western blot was performed on nuclear extracts from HeLa cells (HeLa NE) using the antibody diluted 1:1,000 in TBS-Tween containing 5% skimmed milk (lane 2). A molecular weight marker is shown in lane 1; the location of the protein of interest is indicated on the right.



Immunoprecipitation was performed on nuclear extracts from cells transfected with FLAG-tagged L3MBTL1 (L3MBTL1-F) with the antibody and with an IgG negative control antibody. Western Blot was performed with an anti-FLAG antibody to demonstrate the presence of L3MBTL1-F in the input (lane 1), in the precipitated fraction (P) and in the supernatant (SN). These data show that L3MBTL1-F was efficiently precipitated by the L3MBTL1 antibody (lane 3 and 5), whereas it was not precipitated by the IgG negative control antibody (lane 2 and 4).

RELATED PRODUCTS:

- CBX4 Antibody (NT) (Cat. No. 5284-100)
- EED Antibody (NT) (Cat. No. 5292-100)
- EZH1 Antibody (Cat # 6123-100)
- EZH2 Antibody (Cat # 3242-100)
- EZH2 Inhibitor, EPZ005687 (Cat # 2364-2, -10)
- EZH1 Antibody (Cat # 6123-100)
- EZH Antibody (Cat # 6838-25)

