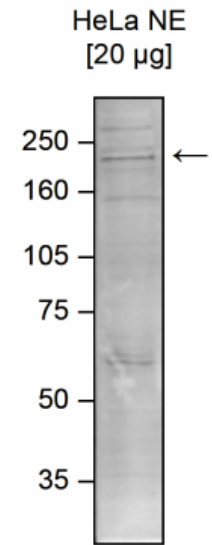


CHD1 Antibody

ALTERNATE NAMES:	CHD-1, ATPase DNA-binding protein 1
CATALOG #:	6859-25
AMOUNT:	25 µg
HOST/ISOTYPE:	Rabbit
IMMUNOGEN:	Polyclonal antibody raised in rabbit against human CHD1 (Chromodomain helicase DNA binding protein 1), using a GST fused recombinant protein.
FORM:	Liquid
FORMULATION:	In PBS with 0.05% (W/V) sodium azide and 0.05% ProClin 300.
PURIFICATION:	Protein G purified
SPECIES REACTIVITY:	Human.
STORAGE CONDITIONS:	Store at -20°C; for long storage, store at -80°C. Avoid multiple freeze-thaw cycles.
DESCRIPTION:	CHD1 is a member of the CHD (chromodomain-helicase-DNA-binding) family of proteins that interacts with nucleosomes and plays a role in chromatin remodeling to modulate transcription. The members of the CHD family of proteins possess 3 common structural and functional domains: a chromodomain (chromatin organization modifier), an SNF2-like helicase/ATPase domain, and a C-terminal DNA-binding domain. CHD1 has been shown to interact with the transcriptional corepressor NCoR and histone deacetylase 1 indicating a role in transcriptional regulation. CHD1 has also been shown to interact with the Paf1 complex and Rtf1 implicating an additional role in transcriptional elongation.
APPLICATION:	Western Blot: 1:500

Note: This information is only intended as a guide. The optimal dilutions must be determined by the user.



Western blot was performed on nuclear extracts from HeLa cells (HeLa NE) using the antibody diluted 1:1,000 in TBS-Tween containing 5% skimmed milk (lane 2). A molecular weight marker is shown in lane 1; the location of the protein of interest is indicated on the right.

RELATED PRODUCTS:

- CBX4 Antibody (NT) (Cat. No. 5284-100)
- EED Antibody (NT) (Cat. No. 5292-100)
- EZH1 Antibody (Cat # 6123-100)
- EZH2 Antibody (Cat # 3242-100)
- EZH2 Inhibitor, EPZ005687 (Cat # 2364-2, -10)
- EZH1 Antibody (Cat # 6123-100)
- EZH Antibody (Cat # 6838-25)

FOR RESEARCH USE ONLY! Not to be used on humans.

