

CBX5 Antibody

ALTERNATE NAMES: HP1 α , HP1A

CATALOG #: 6860-25

AMOUNT: 25 μ g

HOST/ISOTYPE: Rabbit

IMMUNOGEN: Polyclonal antibody raised in rabbit against human HP1 α (Heterochromatin protein 1 homolog alpha), using the full length recombinant GST tagged protein.

FORM: Liquid

FORMULATION: In PBS with 0.05% (W/V) sodium azide and 0.05% ProClin 300.

PURIFICATION: Protein G purified

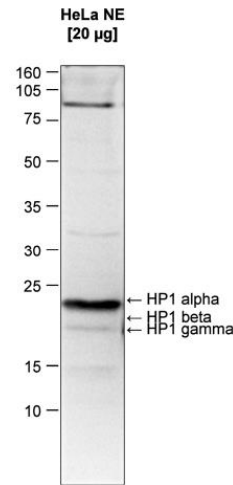
SPECIES REACTIVITY: Human.

STORAGE CONDITIONS: Store at -20°C; for long storage, store at -80°C. Avoid multiple freeze-thaw cycles.

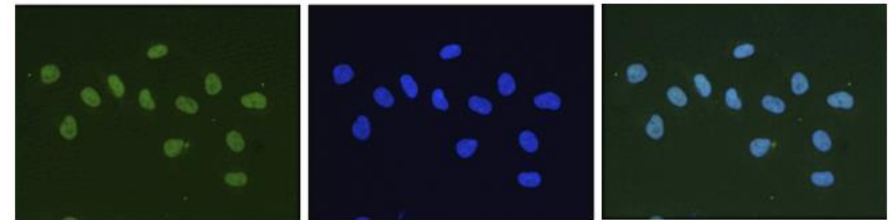
DESCRIPTION: CBX5/HP1 alpha is a component of heterochromatin. It recognizes and binds to histone H3 tails methylated at 'Lys-9', leading to epigenetic repression of transcription. HP1 alpha may also interact with lamin B receptor (LBR), thereby contributing to the association of the heterochromatin with the inner nuclear membrane. Further, HP1 alpha is involved in the formation of a functional kinetochore through interaction with MIS12 complex proteins.

APPLICATION: Western Blot: 1:1000, IF: 1:500

Note: This information is only intended as a guide. The optimal dilutions must be determined by the user.



Western blot was performed on nuclear extracts from HeLa cells (20 μ g) with the antibody diluted 1:1,000 in TBS-Tween containing 5% skimmed milk (Figure 1). The molecular weight marker (in kDa) is shown on the left; the expected location of HP1 α , HP1 β and HP1 γ is indicated on the right. The western blot analysis clearly demonstrates that the HP1 α antibody specifically recognizes HP1 α and not HP1 β and HP1 γ .



HeLa cells were stained with the antibody and with DAPI. Cells were fixed with 4% formaldehyde for 10' and blocked with PBS/TX-100 containing 5% normal goat serum and 1% BSA. The cells were immunofluorescently labelled with the HP1 α antibody (left) diluted 1:500 in blocking solution followed by an anti-rabbit antibody conjugated to Alexa488. The middle panel shows staining of the nuclei with DAPI. A merge of the two stainings is shown on the right.

RELATED PRODUCTS:

- CBX1 Antibody (Cat. No. 6146-50)
- CBX2 Antibody (Cat. No. 6840-100)
- CBX3 Antibody (Cat. No. 6147-100)
- CBX4 Antibody (Cat. No. 5284-100)
- CBX5 Antibody (Cat. No. 6148-100)

FOR RESEARCH USE ONLY! Not to be used on humans.

