

# BMI1 Antibody

**ALTERNATE NAMES:** PCGF4, RNF51, FLVI2

**CATALOG #:** 6862-50

**AMOUNT:** 50 µl

**HOST/ISOTYPE:** Rabbit

**IMMUNOGEN:** Polyclonal antibody raised in rabbit against mouse BMI1 (BMI1 polycomb ring finger oncogene) using two KLH conjugated synthetic peptides containing a sequence from the central and the C-terminal region of the protein, respectively.

**FORM:** Liquid

**FORMULATION:** In PBS with 0.05% (W/V) sodium azide.

**PURIFICATION:** Whole antiserum from rabbit

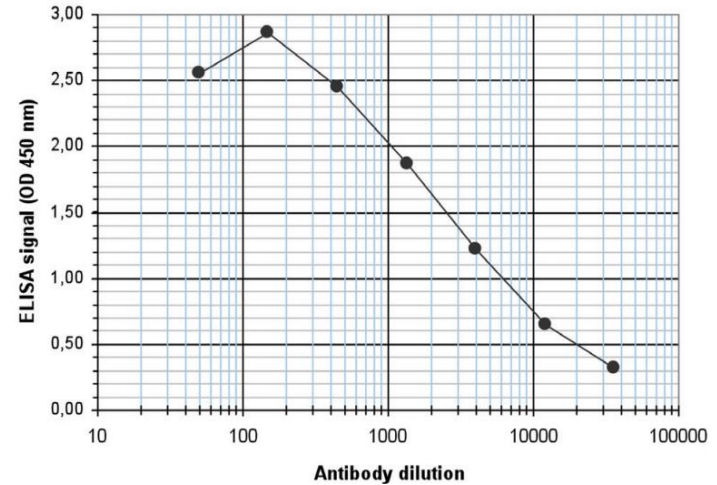
**SPECIES REACTIVITY:** Mouse

**STORAGE CONDITIONS:** Store at -20°C; for long storage, store at -80°C. Avoid multiple freeze-thaw cycles.

**DESCRIPTION:** BMI1 (B lymphoma Mo-MLV insertion region 1 homolog) is a core component of the polycomb group (PcG) multiprotein PRC1 complex which plays an important role in transcriptional repression of gene expression during development. BMI1 association with RING protein 1B is important to the E3 ligase activity of RING1B in the PRC1 complex. BMI1 is an oncogene whose overexpression is associated with many types of human tumors and is a stem-cell marker and regulator of stem cell self-renewal.

**APPLICATION:** ELISA: 1:300.

**Note:** This information is only intended as a guide. The optimal dilutions must be determined by the user.



To determine the titer, an ELISA was performed using a serial dilution of the antibody. The wells were coated with the peptide used for immunization of the rabbit. By plotting the absorbance against the antibody dilution, the titer of the antibody was estimated to be 1:3100.

**RELATED PRODUCTS:**

- CBX4 Antibody (NT) (Cat. No. 5284-100)
- EED Antibody (NT) (Cat. No. 5292-100)
- L3MBTL1 Antibody (Cat. No. 6857-25)
- EZH1 Antibody (Cat # 6123-100)
- EZH2 Antibody (Cat # 3242-100)
- EZH2 Inhibitor, EPZ005687 (Cat # 2364-2, -10)
- EZH1 Antibody (Cat # 6123-100)
- EZH Antibody (Cat # 6838-25)

**FOR RESEARCH USE ONLY! Not to be used on humans.**

