

Cyclin F Antibody

ALTERNATE NAMES: F-box only protein 1, CCNF, FBX1, FBXO1, G2/mitotic-specific cyclin-F

CATALOG #: 6933-50

AMOUNT: 50 µl

HOST/ISOTYPE: Rabbit

IMMUNOGEN: This Cyclin F antibody is generated from KLH-conjugated synthetic peptide encompassing a sequence within the C-term region of human Cyclin F. The exact sequence is proprietary.

INTERNAL ID: DM-02

MOLECULAR WEIGHT: ~87.00 kDa

FORM: Liquid

FORMULATION: 1 mg/ml in 0.42% Potassium phosphate, 0.87% Sodium chloride, pH 7.3, 30% glycerol, and 0.01% sodium azide.

PURIFICATION: This antibody is purified by immunogen affinity chromatography.

SPECIES REACTIVITY: Human, Mouse, Rat.

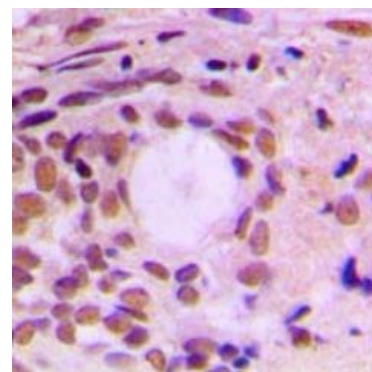
STORAGE CONDITIONS: Aliquot and store at -20°C for one year. Avoid freeze/thaw cycles.

DESCRIPTION: Cyclin F is a substrate recognition component of a SCF (SKP1-CUL1-F-box protein) E3 ubiquitin-protein ligase complex which mediates the ubiquitination and subsequent proteasomal degradation of CP110 during G2 phase, thereby acting as an inhibitor of centrosome reduplication. It is ubiquitously expressed in human cells but fluctuates dramatically through the cell cycle, peaking in G2 like cyclin A and decreasing prior to decline of cyclin B. Cyclin F exhibits regulated subcellular localization, being localized in the nucleus in most cells, with a significant percentage of cells showing only perinuclear staining.

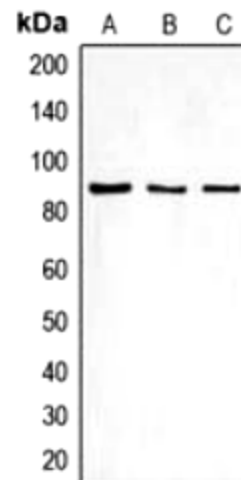
APPLICATION: WB: 1:500 - 1:1000, IHC: 1:100 – 1:200.

Note: This information is only intended as a guide. The optimal dilutions must be determined by the user.

FOR RESEARCH USE ONLY! Not to be used on humans.



Immunohistochemical analysis of Cyclin F staining in human breast cancer formalin fixed paraffin embedded tissue section. The section was pre-treated using heat mediated antigen retrieval with sodium citrate buffer (pH 6.0). The section was then incubated with the antibody at room temperature and detected using an HRP conjugated compact polymer system. DAB was used as the chromogen. The section was then counterstained with haematoxylin and mounted with DPX.



Western blot analysis of Cyclin F expression in HEK293T (A), mouse liver (B), rat liver (C) whole cell lysates.

RELATED PRODUCTS:

- Cyclin E1 Antibody (Cat # 6932-50)
- Cyclin G1 Antibody (Cat # 6934-50)

