

CD1e Antibody

ALTERNATE NAMES: T-cell surface glycoprotein CD1e membrane-associated; hCD1e; R2G1; CD1e

CATALOG #: 6935-50

AMOUNT: 50 µl

HOST/ISOTYPE: Rabbit

IMMUNOGEN: This CD1e antibody is generated from KLH-conjugated synthetic peptide encompassing a sequence within the center region of human CD1e. The exact sequence is proprietary.

INTERNAL ID: DM-04

MOLECULAR WEIGHT: ~36.00 kDa

FORM: Liquid

FORMULATION: 1 mg/ml in 0.42% Potassium phosphate, 0.87% Sodium chloride, pH 7.3, 30% glycerol, and 0.01% sodium azide.

PURIFICATION: This antibody is purified by immunogen affinity chromatography.

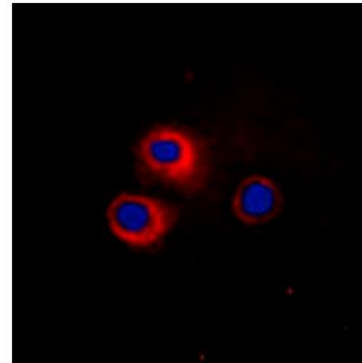
SPECIES REACTIVITY: Human, Mouse, Rat.

STORAGE CONDITIONS: Aliquot and store at -20°C for one year. Avoid freeze/thaw cycles.

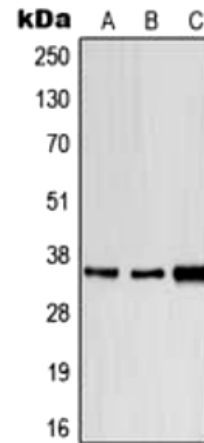
DESCRIPTION: CD1E encodes a member of the CD1 family of transmembrane glycoproteins, which are structurally related to the major histocompatibility complex (MHC) proteins and form heterodimers with beta-2-microglobulin. The CD1 proteins mediate the presentation of primarily lipid and glycolipid antigens of self or microbial origin to T cells. The human genome contains five CD1 family genes organized in a cluster on chromosome 1. The CD1 family members are thought to differ in their cellular localization and specificity for particular lipid ligands. The protein encoded by this gene localizes within Golgi compartments, endosomes, and lysosomes, and is cleaved into a stable soluble form. The soluble form is required for the intracellular processing of some glycolipids into a form that can be presented by other CD1 family members.

APPLICATION: WB: 1:500 - 1:1000, IF/IC: 1:100 – 1:500.

Note: This information is only intended as a guide. The optimal dilutions must be determined by the user.



IF analysis of CD1e staining in HeLa cells. Formalin-fixed cells were permeabilized with 0.1% Triton X-100 in TBS for 5-10 minutes and blocked with 3% BSA-PBS for 30 minutes at room temperature. Cells were probed with the primary antibody in 3% BSA-PBS and incubated overnight at 4 °C in a humidified chamber. Cells were washed with PBST and incubated with a DyLight 594-conjugated secondary antibody (red) in PBS at room temperature in the dark. DAPI was used to stain the cell nuclei (blue).



Western blot analysis of CD1e expression in HeLa (A), SP20 (B), H9C2 (C) whole cell lysates.

RELATED PRODUCTS:

- CD1E, human recombinant (Cat # 7308-100)
- CD3d Antibody (Cat # 6936-50)
- CD4 Antibody (Cat # 6937-50)
- CD9 Antibody (Cat # 6938-50)
- CD58 Antibody (Cat # 6939-50)

