

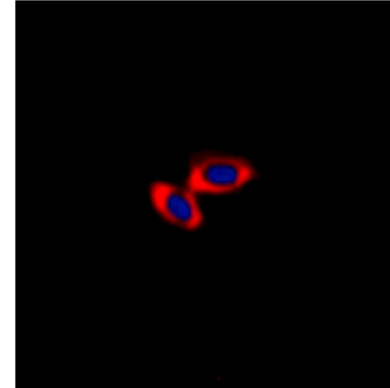
CD3d Antibody

ALTERNATE NAMES:	T3D; T-cell surface glycoprotein CD3 delta chain; T-cell receptor T3 delta chain; CD3d
CATALOG #:	6936-50
AMOUNT:	50 µl
HOST/ISOTYPE:	Rabbit
IMMUNOGEN:	This CD3d antibody is generated from KLH-conjugated synthetic peptide encompassing a sequence within the center region of human CD3d. The exact sequence is proprietary.
INTERNAL ID:	DM-05
MOLECULAR WEIGHT:	~20.00 kDa
FORM:	Liquid
FORMULATION:	1 mg/ml in 0.42% Potassium phosphate, 0.87% Sodium chloride, pH 7.3, 30% glycerol, and 0.01% sodium azide.
PURIFICATION:	This antibody is purified by immunogen affinity chromatography.
SPECIES REACTIVITY:	Human, Monkey.
STORAGE CONDITIONS:	Aliquot and store at -20°C for one year. Avoid freeze/thaw cycles.

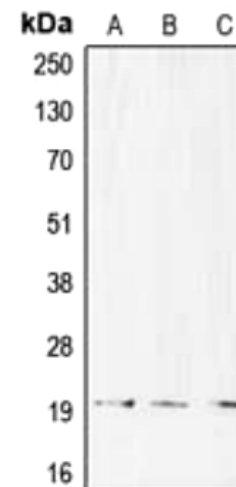
DESCRIPTION: T-cell surface glycoprotein CD3 delta chain, also known as CD3D, is a single-pass type I membrane protein. CD3D, together with CD3-gamma, CD3-epsilon and CD3-zeta, and the T-cell receptor alpha/beta and gamma/delta heterodimers, forms the T cell receptor-CD3 complex. T cell receptor-CD3 complex plays an important role in coupling antigen recognition to several intracellular signal-transduction pathways. This complex is critical for T-cell development and function, and represents one of the most complex transmembrane receptors. The T cell receptor-CD3 complex is unique in having ten cytoplasmic immunoreceptor tyrosine based activation motifs (ITAMs). Defects in CD3D cause severe combined immunodeficiency autosomal recessive T-cell-negative/B-cell-positive/NK cell-positive (T-/B+/NK+SCID) which is a genetically and clinically heterogeneous group of rare congenital disorders characterized by impairment of both humoral and cell-mediated immunity, leukopenia, and low or absent antibody levels.

APPLICATION: WB: 1:500 - 1:1000, IF/IC: 1:100 – 1:500.

Note: This information is only intended as a guide. The optimal dilutions must be determined by the user.



IF analysis of CD3d staining in Jurkat cells. Formalin-fixed cells were permeabilized with 0.1% Triton X-100 in TBS for 5-10 minutes and blocked with 3% BSA-PBS for 30 minutes at room temperature. Cells were probed with the primary antibody in 3% BSA-PBS and incubated overnight at 4 °C in a humidified chamber. Cells were washed with PBST and incubated with a DyLight 594-conjugated secondary antibody (red) in PBS at room temperature in the dark. DAPI was used to stain the cell nuclei (blue).



Western blot analysis of CD3d expression in CCRFCEM (A), Jurkat (B), HuT78 (C) whole cell lysates.

RELATED PRODUCTS:

- CD1E, human recombinant (Cat # 7308-100)
- CD1e Antibody (Cat # 6935-50)
- CD4 Antibody (Cat # 6937-50)
- CD9 Antibody (Cat # 6938-50)
- CD58 Antibody (Cat # 6939-50)

FOR RESEARCH USE ONLY! Not to be used on humans.