

CD4 Antibody

ALTERNATE NAMES: T-cell surface glycoprotein CD4; T-cell surface antigen T4/Leu-3; CD4

CATALOG #: 6937-50

AMOUNT: 50 µl

HOST/ISOTYPE: Rabbit

IMMUNOGEN: This CD4 antibody is generated from KLH-conjugated synthetic peptide encompassing a sequence within the C-term region of human CD4. The exact sequence is proprietary.

INTERNAL ID: DM-06

MOLECULAR WEIGHT: ~55.00 kDa

FORM: Liquid

FORMULATION: 1 mg/ml in 0.42% Potassium phosphate, 0.87% Sodium chloride, pH 7.3, 30% glycerol, and 0.01% sodium azide.

PURIFICATION: This antibody is purified by immunogen affinity chromatography.

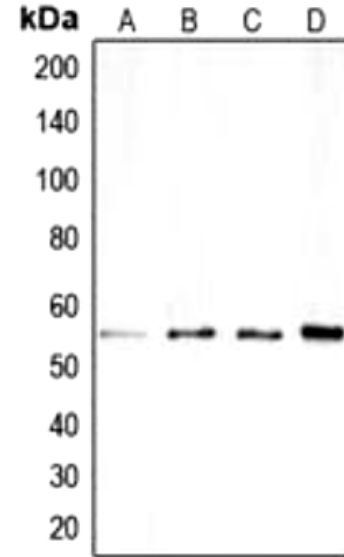
SPECIES REACTIVITY: Human, Mouse, Rat, Dog, Monkey.

STORAGE CONDITIONS: Aliquot and store at -20°C for one year. Avoid freeze/thaw cycles.

DESCRIPTION: CD4 is a cell-surface glycoprotein found on the mature helper T cells and immature thymocytes, as well as on monocytes and macrophages. (Some cytotoxic T cells have CD4 protein as well.) Normally, about 65% of T cells in the blood are CD4+ (have CD4 protein protruding from their membrane). A mature T cell with have either CD4 or CD8, but not both. During one stage of development T cells develop CD4 and CD8 receptors, but they eventually are differentiated in the thymus and become more specialized. CD4 is also expressed on cortical cells, mature medullary thymocytes, microglial cells and dendritic cells.

APPLICATION: WB: 1:500 - 1:1000.

Note: This information is only intended as a guide. The optimal dilutions must be determined by the user.



Western blot analysis of CD4 expression in (A), SP20 (B), PC12 (C), H9C2 (D) whole cell lysates.

RELATED PRODUCTS:

- CD1E, human recombinant (Cat # 7308-100)
- CD1e Antibody (Cat # 6935-50)
- CD3d Antibody (Cat # 6936-50)
- CD9 Antibody (Cat # 6938-50)
- CD58 Antibody (Cat # 6939-50)

FOR RESEARCH USE ONLY! Not to be used on humans.

