

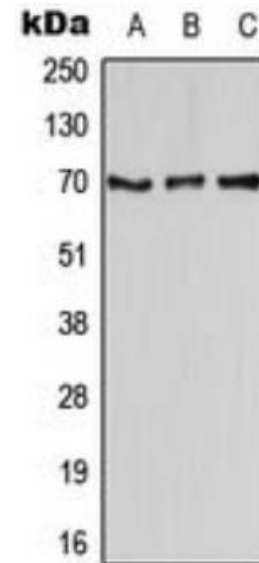
CD58 Antibody

ALTERNATE NAMES:	LFA3; Lymphocyte function-associated antigen 3; Ag3; Surface glycoprotein LFA-3; CD58
CATALOG #:	6939-50
AMOUNT:	50 µl
HOST/ISOTYPE:	Rabbit
IMMUNOGEN:	This CD58 antibody is generated from KLH-conjugated synthetic peptide encompassing a sequence within the center region of human CD58. The exact sequence is proprietary.
INTERNAL ID:	DM-08
MOLECULAR WEIGHT:	~70.00 kDa
FORM:	Liquid
FORMULATION:	1 mg/ml in 0.42% Potassium phosphate, 0.87% Sodium chloride, pH 7.3, 30% glycerol, and 0.01% sodium azide.
PURIFICATION:	This antibody is purified by immunogen affinity chromatography.
SPECIES REACTIVITY:	Human, Mouse, Rat.
STORAGE CONDITIONS:	Aliquot and store at -20°C for one year. Avoid freeze/thaw cycles.

DESCRIPTION: CD58, also known as lymphocyte function-associated antigen 3 (LFA-3) is a 45-70 kD cell surface protein that is a member of the immunoglobulin superfamily. Alternative splicing of CD58 gives rise to transmembrane and glycosylphosphatidylinositol (GPI)-anchored forms on cell surface. CD58 is expressed on both hematopoietic and non-hematopoietic cells including B cells, T cells, monocytes, erythrocytes, endothelial cells, epithelial cells, and fibroblasts. High levels are observed on memory T cells and dendritic cells. CD58 expressed on antigen presenting cells and target cells enhances T cell recognition via the binding of its cognate ligand, CD2, on the T cell surface.

APPLICATION: WB: 1:500 - 1:1000.

Note: This information is only intended as a guide. The optimal dilutions must be determined by the user.



Western blot analysis of CD58 expression in HEK293T (A), Raw264.7 (B), H9C2 (C) whole cell lysates.

RELATED PRODUCTS:

- CD1E, human recombinant (Cat # 7308-100)
- CD1e Antibody (Cat # 6935-50)
- CD3d Antibody (Cat # 6936-50)
- CD4 Antibody (Cat # 6937-50)
- CD9 Antibody (Cat # 6938-50)

FOR RESEARCH USE ONLY! Not to be used on humans.