

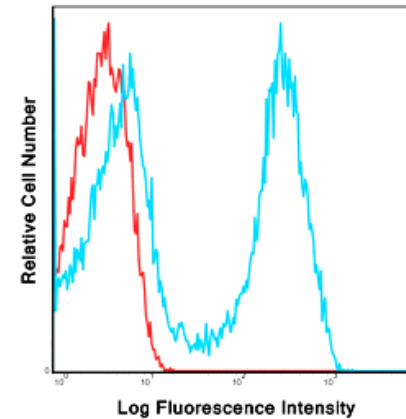
CD3 FITC Monoclonal Antibody (Clone OKT3)

CATALOG #:	6952-25 6952-100	25 tests 100 tests
ALTERNATE NAMES:	CD3.	
HOST:	Mouse	
ISOTYPE:	IgG2a, Kappa	
PURIFICATION:	Affinity chromatography. Unreacted dye removed from the product.	
IMMUNOGEN:	Human CD3	
FORM:	Liquid	
FORMULATION:	Phosphate-buffered aqueous solution pH 7.2, ≤0.09% Sodium azide, may contain carrier protein/stabilizer.	
SPECIES REACTIVITY:	Human	
STORAGE CONDITIONS:	Product should be kept at 2-8°C and protected from prolonged exposure to light.	

DESCRIPTION: CD3 (T3), a complex T cell marker, is known to associate noncovalently with the α/β or γ/δ heterodimer of the T cell antigen receptor (TCR) to form the most complex transmembrane (TM) receptor structures. CD3 is specially engaged in antigen recognition and is known to play an important role in mediating signals that are critical for T cell development in the thymus, proliferation, and induction of T cell-mediated immune responses against infectious agents and also in the differentiation of T cells into effector and memory populations. CD3 usually expresses in the cytoplasm of prothymocytes, and on the surface of about 95% of thymocytes, but cytoplasmic CD3 is lost as the cells differentiate into medullary thymocytes. Apart from its role as an important marker in the classification of malignant lymphomas and lymphoid leukemia, CD3 can also be useful for the identification of T cells in celiac disease, lymphocytic colitis and colorectal carcinomas associated with loss of a mismatch repair protein. CD3 indirectly plays an important role in immunomodulation whereas the anti-CD3 antibody may be used in *in vitro* Treg assays to generate effector T cells. The CD3 complex contains γ , δ , and ϵ chains, and it is part of the TCR complex, expressed by all mature T lymphocytes and by the thymocyte lineage. The OKT3 monoclonal antibody specifically reacts with the ϵ chain of the CD3/T lymphocyte antigen receptor complex. CD3 enhances the antigen recognition by signal transduction. The OKT3 antibody is an immunosuppressive, which has proven to be an effective therapeutic agent in liver, heart, and renal allograft rejection.

APPLICATION: Flow (Cell Surface): 5 μ l/1x10⁶ cells, Volume per test: 5 μ l (1 μ g).

Note: This information is only intended as a guide. The optimal dilutions must be determined by the user.



Laser: Blue (488nm)
Peak Emission: 520nm
Peak Excitation: 494nm
Filter: 530/30
Brightness (1=dim, 5=brightest): 3

Human peripheral blood lymphocytes were stained with FITC OKT3 with relevant isotype control in Red.

RELATED PRODUCTS:

- CD-14 Antibody (Clone biG 10) (Cat. No. 3676-100)
- CD40 Antibody (Cat. No. 3072-100)
- CD40L Antibody (Clone 2A12A7) (Cat. No. 5015-100)
- CD-14, human recombinant (Cat. No. 4937-10)
- CD-14, mouse recombinant (Cat. No. 4938-10)
- CD40Ligand/TRAP, human recombinant (Cat. No. 4014-10, -50, -1000)
- CD40Ligand/TRAP, murine recombinant (Cat. No. 4015-10, -50, -1000)

FOR RESEARCH USE ONLY! Not to be used on humans.