

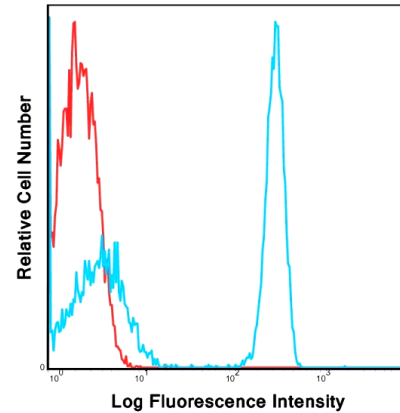
CD4 FITC Monoclonal Antibody (Clone RPA-T4)

CATALOG #:	6953-25 6953-100	25 tests 100 tests
ALTERNATE NAMES:	CD4.	
HOST:	Mouse	
ISOTYPE:	IgG1, Kappa	
PURIFICATION:	Affinity chromatography. Unreacted dye removed from the product.	
IMMUNOGEN:	Human CD4	
FORM:	Liquid	
FORMULATION:	Phosphate-buffered aqueous solution pH 7.2, ≤0.09% Sodium azide, may contain carrier protein/stabilizer.	
SPECIES REACTIVITY:	Human	
STORAGE CONDITIONS:	Product should be kept at 2-8°C and protected from prolonged exposure to light. Do not freeze.	

DESCRIPTION: CD4 is an Immunoglobulin Superfamily protein and an accessory protein for MHC class-II antigen/ T-cell receptor interaction. It may regulate T-cell activation. It plays a more general role in mediating cell recognition events than merely those of cellular immune response. The T4 molecule serves as a receptor for the human immunodeficiency virus. A Type I membrane protein, it is expressed on T lymphocytes, B-cells, macrophages, and granulocytes. It is also expressed in a developmentally regulated manner in specific regions of the brain. RPA-T4 is capable of blocking HIV-1, gp120, and inhibits syncytium formation. The RPA-T4 clone reacts with CD4, a 59 kDa single-chain transmembrane glycoprotein [receptor for human HIV virus] present on T-helper/inducer cell populations. This antibody binds to the D1 domain of CDR1 and CDR3 epitopes. The CD4 antigen and reacts with approximately 80% of thymocytes and 45% of peripheral blood lymphocytes. CD4 is also present in low density on peripheral blood monocytes. The RPA-T4 monoclonal antibody specifically binds to the CD4 receptor for the human immunodeficiency virus (HIV). CD4 is a 59 kDa single-chain transmembrane glycoprotein that expressed on the surface of most of the thymocytes, T-helper cells, and in low levels on monocytes and macrophages. CD4 is a co-receptor in the antigen-induced T cell activation, together with the MHC class II.

APPLICATION: Flow (Cell Surface): 5 µl/1x10⁶ cells, Volume per test: 5 µl (1 µg).

Note: This information is only intended as a guide. The optimal dilutions must be determined by the user



Laser: Blue (488nm)
Peak Emission: 520nm
Peak Excitation: 494nm
Filter: 530/30
Brightness (1=dim, 5=brightest): 3

Human peripheral blood lymphocytes were stained with FITC RPA-T4 with relevant isotype control in Red.

RELATED PRODUCTS:

- CD-14 Antibody (Clone biG 10) (Cat. No. 3676-100)
- CD40 Antibody (Cat. No. 3072-100)
- CD40L Antibody (Clone 2A12A7) (Cat. No. 5015-100)
- CD-14, human recombinant (Cat. No. 4937-10)
- CD-14, mouse recombinant (Cat. No. 4938-10)
- CD40Ligand/TRAP, human recombinant (Cat. No. 4014-10, -50, -1000)
- CD40Ligand/TRAP, murine recombinant (Cat. No. 4015-10, -50, -1000)

FOR RESEARCH USE ONLY! Not to be used on humans.