

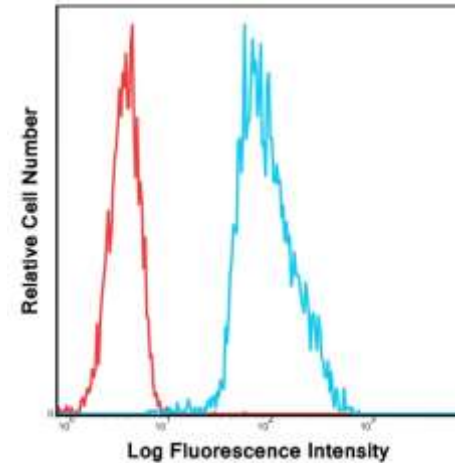
CD11c FITC Monoclonal Antibody (Clone 3.9)

CATALOG #:	6956-25 6956-100	25 tests 100 tests
ALTERNATE NAMES:	CD11c	
HOST:	Mouse	
ISOTYPE:	IgG1, Kappa	
PURIFICATION:	Affinity chromatography. Unreacted dye removed from the product.	
IMMUNOGEN:	Human CD11c	
FORM:	Liquid	
FORMULATION:	Phosphate-buffered aqueous solution pH 7.2, ≤0.09% Sodium azide, may contain carrier protein/stabilizer.	
SPECIES REACTIVITY:	Human	
STORAGE CONDITIONS:	Product should be kept at 2-8°C and protected from prolonged exposure to light. Do not freeze.	

DESCRIPTION: CD11c also known as Integrin alpha-X/beta-2 is a member of the leukointegrin family with 1163 amino acids and contains seven FG-GAP repeats, a VWFA domain and is a heterodimer of an alpha and a beta subunit where alpha-X associates with beta-2. It binds with the beta 2 chain (ITGB2) to form a leukocyte-specific integrin known as inactivated-C3b (iC3b) receptor 4 (CR4), provisional matrix molecules (fibrinogen) where it recognizes the sequence G-P-R in fibrinogen, and the Ig superfamily cell adhesion molecule, ICAM-1. Recent reports suggest that CD11c acts as a DC marker, and may even act as an immunotarget for vaccine production and generation of both CD4 and CD8 T cell responses. The functions of CD11c include phagocytosis of complement coated particles, cell migration, cytokine production by monocytes/macrophages, induction of T cell proliferation by Langerhans cells, leukocyte recruitment, capturing antigens in lymphoid tissues, and the survival of APC. It is predominantly expressed in tissue macrophages, dendritic cells, monocytes and granulocytes. The 3.9 monoclonal antibody specifically binds to the human adhesion glycoprotein CD11c, a 150 kDa integrin α chain also known as integrin alpha X. The CD11c/CD18 complex associates with the iC3b, fibrinogen and ICAM-1 and has an important function in leukocyte adhesion.

APPLICATION: Flow (Cell Surface): 5 μ l/1x10⁶ cells, Volume per test: 5 μ l (1 μ g).

Note: This information is only intended as a guide. The optimal dilutions must be determined by the user



Laser: Blue (488nm)
Peak Emission: 520nm
Peak Excitation: 494nm
Filter: 530/30
Brightness (1=dim, 5=brightest): 3

Human peripheral blood monocytes were stained with FITC 3.9 with relevant isotype control in Red.

RELATED PRODUCTS:

- CD-14 Antibody (Clone biG 10) (Cat. No. 3676-100)
- CD40 Antibody (Cat. No. 3072-100)
- CD40L Antibody (Clone 2A12A7) (Cat. No. 5015-100)
- CD-14, human recombinant (Cat. No. 4937-10)
- CD-14, mouse recombinant (Cat. No. 4938-10)
- CD40Ligand/TRAP, human recombinant (Cat. No. 4014-10, -50, -1000)
- CD40Ligand/TRAP, murine recombinant (Cat. No. 4015-10, -50, -1000)

FOR RESEARCH USE ONLY! Not to be used on humans.