

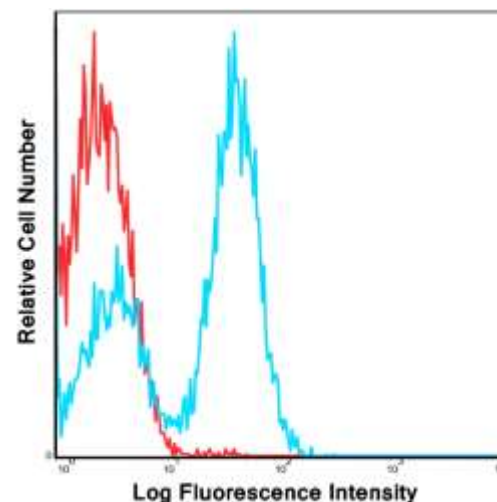
# CD28 FITC Monoclonal Antibody (Clone CD28.2)

CATALOG #:	6957-25 6957-100	25 tests 100 tests
ALTERNATE NAMES:	CD28	
HOST:	Mouse	
ISOTYPE:	IgG1, Kappa	
PURIFICATION:	Affinity chromatography. Unreacted dye removed from the product.	
IMMUNOGEN:	Human CD28	
FORM:	Liquid	
FORMULATION:	Phosphate-buffered aqueous solution pH 7.2, $\leq 0.09\%$ Sodium azide, may contain carrier protein/stabilizer.	
SPECIES REACTIVITY:	Human	
STORAGE CONDITIONS:	Product should be kept at 2-8°C and protected from prolonged exposure to light. <b>Do not freeze.</b>	

**DESCRIPTION:** CD28 (Cluster of Differentiation 28) is one of the molecules expressed on T cells that provide co-stimulatory signals, which are required for T cell activation. CD28 is the receptor for CD80 (B7.1) and CD86 (B7.2). When activated by Toll-like receptor ligands, the CD80 expression is upregulated in antigen presenting cells (APCs). The CD86 expression on antigen presenting cells is constitutive. CD28 is the only B7 receptor constitutively expressed on naive T cells. The CD28.2 monoclonal antibody specifically binds with the human 44 kDa homodimeric trans-membrane glycoprotein CD28, expressed on the surface of most mature T lymphocytes, plasma cells, and thymocytes. CD28 is a ligand for B7-1 (CD80) and B7-2 (CD86), a co-stimulator of T lymphocytes, and enhances the interaction between T and B lymphocytes. It has been reported that the T lymphocytes stimulation to produce IL-2 depends on the monoclonal antibody involved, which suggests that the CD28 molecule presents some sub regions with distinct functions. The CD28.2 antibody induces  $\text{Ca}^{2+}$  influx in Jurkat T lymphocytes. Other studies have shown that CD28 is involved in the signal transduction.

**APPLICATION:** Flow (Cell Surface): 5  $\mu\text{l}$ /1x10<sup>6</sup> cells, Volume per test: 5  $\mu\text{l}$  (0.5  $\mu\text{g}$ ).

**Note:** This information is only intended as a guide. The optimal dilutions must be determined by the user.



Laser: Blue (488nm)  
Peak Emission: 520nm  
Peak Excitation: 494nm  
Filter: 530/30  
Brightness (1=dim, 5=brightest): 3

Human peripheral blood lymphocytes were stained with FITC CD28.2 with relevant isotype control in Red.

## RELATED PRODUCTS:

- CD-14 Antibody (Clone biG 10) (Cat. No. 3676-100)
- CD40 Antibody (Cat. No. 3072-100)
- CD40L Antibody (Clone 2A12A7) (Cat. No. 5015-100)
- CD-14, human recombinant (Cat. No. 4937-10)
- CD-14, mouse recombinant (Cat. No. 4938-10)
- CD40Ligand/TRAP, human recombinant (Cat. No. 4014-10, -50, -1000)
- CD40Ligand/TRAP, murine recombinant (Cat. No. 4015-10, -50, -1000)

**FOR RESEARCH USE ONLY! Not to be used on humans.**