

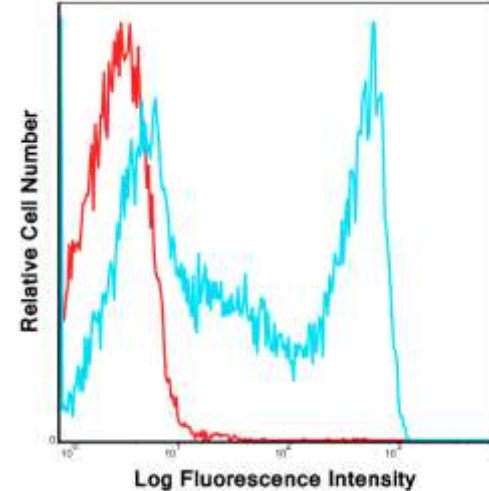
# CD45RO FITC Monoclonal Antibody (Clone UCHL1)

<b>CATALOG #:</b>	6960-25 6960-100	25 tests 100 tests
<b>ALTERNATE NAMES:</b>	CD45RO	
<b>HOST:</b>	Mouse	
<b>ISOTYPE:</b>	IgG2a, Kappa	
<b>PURIFICATION:</b>	Affinity chromatography. Unreacted dye removed from the product.	
<b>IMMUNOGEN:</b>	Human CD45RO	
<b>FORM:</b>	Liquid	
<b>FORMULATION:</b>	Phosphate-buffered aqueous solution pH 7.2, ≤0.09% Sodium azide, may contain carrier protein/stabilizer.	
<b>SPECIES REACTIVITY:</b>	Human	
<b>STORAGE CONDITIONS:</b>	Product should be kept at 2-8°C and protected from prolonged exposure to light. <b>Do not freeze.</b>	

**DESCRIPTION:** CD45, a transmembrane multifunctional glycoprotein, is a member of Type I receptor-linked PTPase family and is expressed as multiple isoforms due to alternative splicing. Expression of these isoforms is highly regulated and shift in this expression determines T-cell activation. CD45RB consists of exon B and is predominantly expressed in naïve T-cells secreting IL-2. Its expression is low in primed/memory T cells, cells that express Th2 cytokines such as IL-4 and IL-10 and population of T-cells with regulatory function. Immunotherapy with CD45RB antibody is being widely studied in transplantation and vaccination. CD45 antibodies are commonly used to identify tumors of lymphoid origin. The UCHL1 monoclonal antibody specifically reacts with human CD45RO, a 180 kDa isoform of the leukocyte common antigen CD45. CD45RO is a transmembrane glycoprotein with tyrosine phosphatase activity and is expressed by majority of thymocytes, monocytes, granulocytes, and activated memory T lymphocytes. The subsets of peripheral T lymphocytes can be discriminated by using the CD45RO and CD45RA expressing cells.

**APPLICATION:** Flow (Cell Surface): 5 µl/1x10<sup>6</sup> cells, Volume per test: 5 µl (0.5 µg).

**Note:** This information is only intended as a guide. The optimal dilutions must be determined by the user.



**Laser:** Blue (488nm)  
**Peak Emission:** 520nm  
**Peak Excitation:** 494nm  
**Filter:** 530/30  
**Brightness (1=dim, 5=brightest):** 3

Human peripheral blood lymphocytes were stained with FITC UCHL1 with relevant isotype control in Red.

## RELATED PRODUCTS:

- CD-14 Antibody (Clone biG 10) (Cat. No. 3676-100)
- CD40 Antibody (Cat. No. 3072-100)
- CD40L Antibody (Clone 2A12A7) (Cat. No. 5015-100)
- CD-14, human recombinant (Cat. No. 4937-10)
- CD-14, mouse recombinant (Cat. No. 4938-10)
- CD40Ligand/TRAP, human recombinant (Cat. No. 4014-10, -50, -1000)
- CD40Ligand/TRAP, murine recombinant (Cat. No. 4015-10, -50, -1000)

**FOR RESEARCH USE ONLY! Not to be used on humans.**