

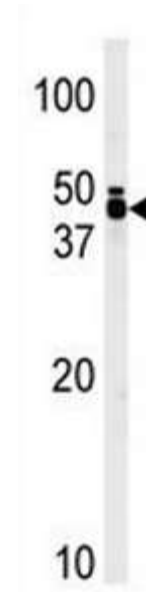
TRIB1 Antibody

ALTERNATE NAMES:	Tribbles homolog 1, TRB-1, G-protein-coupled receptor-induced gene 2 protein, GIG-2, SKIP1, TRIB1
CATALOG #:	6967-100
AMOUNT:	100 µl
HOST/ISOTYPE:	Rabbit Ig
IMMUNOGEN:	This TRIB1 antibody is generated from rabbits immunized with a KLH conjugated synthetic peptide between 341-370 amino acids from the C-terminal region of human TRIB1.
MOLECULAR WEIGHT:	~41.00 kDa
FORM:	Liquid
FORMULATION:	In PBS with 0.09% (W/V) sodium azide.
PURIFICATION:	This antibody is prepared by Saturated Ammonium Sulfate (SAS) precipitation followed by dialysis against PBS.
SPECIES REACTIVITY:	Human. Predicted cross reactivity with mouse samples.
STORAGE CONDITIONS:	Maintain refrigerated at 2-8°C for up to 6 months. For long term storage, store at -20°C in small aliquots to prevent freeze-thaw cycles.

DESCRIPTION: TRIB1 antibody, also called gprotein coupled receptor induced, skip1, gig2, c8fwATP, functions in protein binding, protein kinase inhibitor activity, and protein serine/threonine kinase activities. Overexpression of TRIB1 in HeLa cells repressed the basal activity of the IL8 promoter by inhibiting AP1 activity. Overexpression of TRIB1 inhibited oncogenic Ras -driven AP1 activation and MEKK1-mediated AP1 activation. ERK activation was enhanced by TRIB1. Coimmunoprecipitation and yeast 2-hybrid assays showed that MEK1 interacted with both TRIB1 and TRIB3, and MKK4 interacted specifically with TRIB1. Cotransfection of MKK4 enhanced the level of TRIB1, indicating that the TRIB-MAPKK interaction stabilized TRIB1.

APPLICATION: WB: ~1:1000.

Note: This information is only intended as a guide. The optimal dilutions must be determined by the user.



Western blot analysis of anti-TRIB1 pAb in T47D cell line lysate (35 µg/lane). TRIB1 (arrow) was detected using the purified Pab.

RELATED PRODUCTS:

- Antibodies and Supporting tools
- Proteins and Enzymes

FOR RESEARCH USE ONLY! Not to be used on humans.